

Kick-off meeting of the BiodivTransform Call

Biodiversity and Transformative Change

22 of April from 9:30 to 16:45 AZOST



Co-funded by
the European Union



Welcome words, Transformative Change within Biodiversa+ and General impressions of the BiodivTransform Call

Magnus Tannerfeldt, Biodiversa+ Co-chair, FORMAS, Sweden

Welcome & practicalities

#BiodivTransform

**Posting about the
BiodivTransform
Kick-off on social media?**

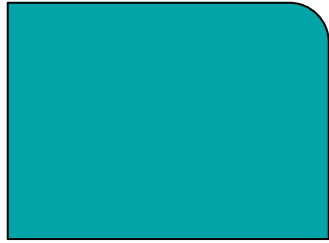
**Don't forget to tag
[@BiodiversaPlus](#)**



Agenda of the Kick-off

| | |
|----------------------|---|
| 09:30 – 09:45 | Transformative Change within Biodiversa+ and General impressions of the BiodivTransform Call |
| 09:45 – 09:55 | Welcome words by the European Commission |
| 9:55 – 10:25 | Keynote speech – “Transformative change, biodiversity, science – Our next move” |
| 10:25 – 11:15 | Presentation of funded projects – Session 1 |
| 11:15 – 11:35 | Coffee break |
| 11:35 – 12:20 | Presentation of funded projects – Session 2 |
| 12:20 – 13:45 | Lunch |
| 13:45 – 15:25 | Presentation of funded projects – Session 3 & 4 |
| 15:25 – 15:45 | Coffee break |
| 15:45 – 16:30 | Presentation of funded projects – Session 5 |

Name-tag colours



Representatives of funded projects



Biodiversa+ partners, European Commission,
Advisory Board, Evaluation Committee

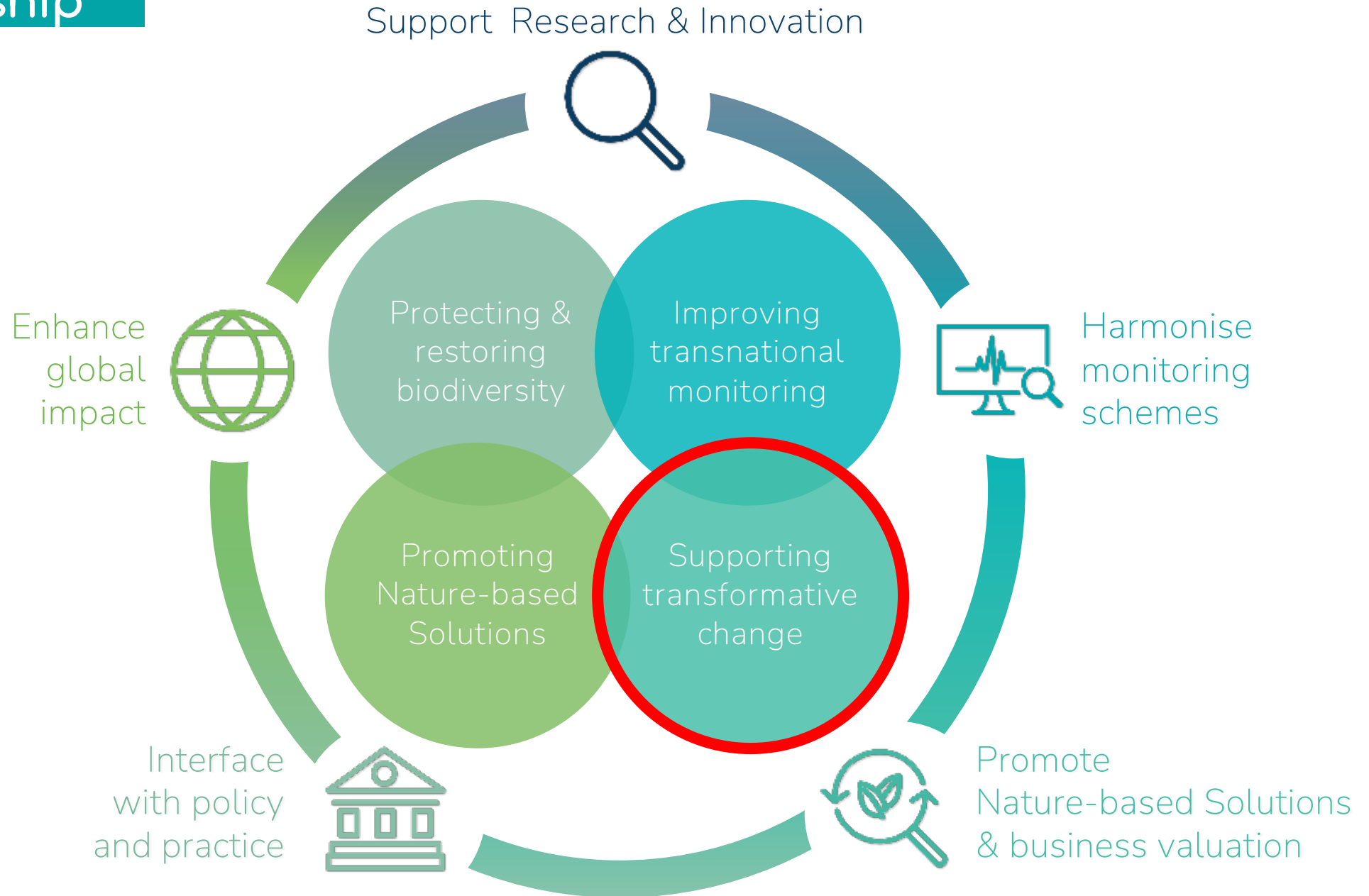


Operational team and Organisers

Transformative Change within Biodiversa+ and General impressions of the BiodivTransform Call

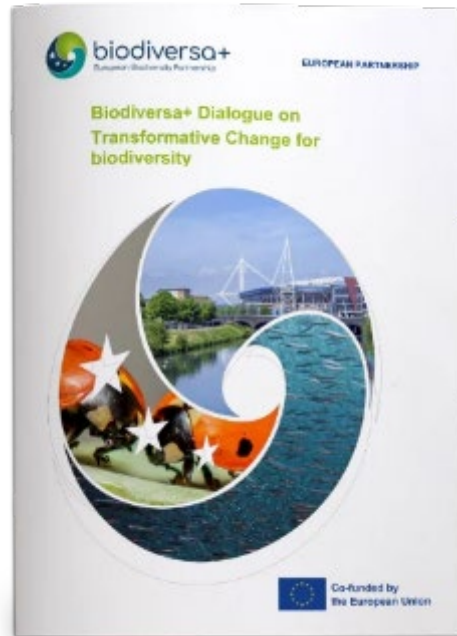


Flagship





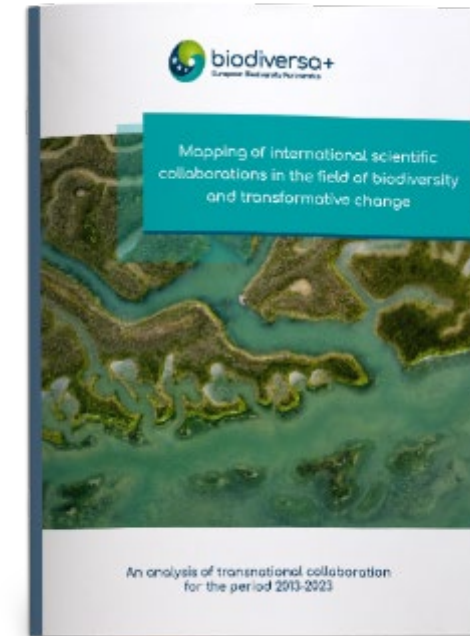
Broad approach



Report on Dialogue-Event on Transformative change for biodiversity (2022)



Recommendations from two workshops on Transformative change for biodiversity (2023)



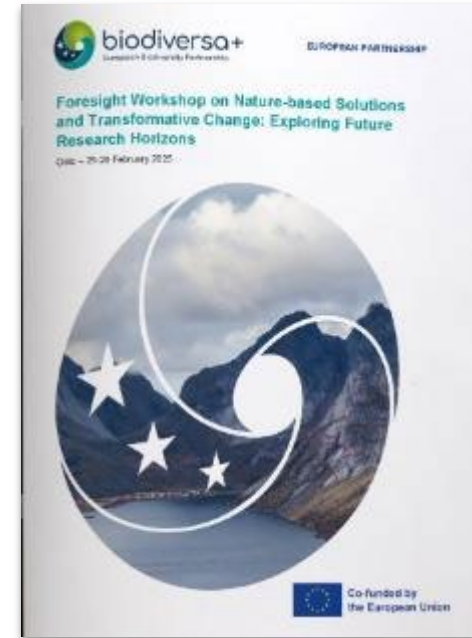
Mapping collaborations in biodiversity and transformative change research (2024)



Broad approach



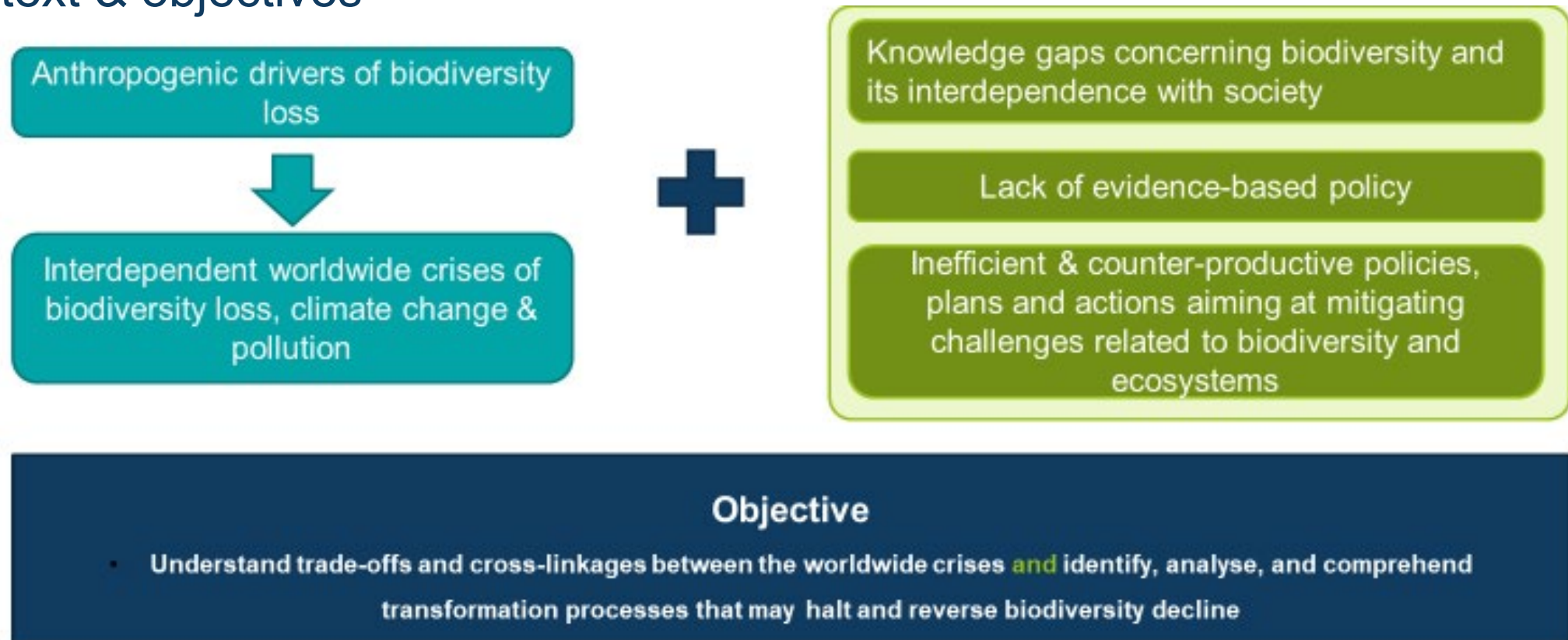
Knowledge synthesis:
How do Nature-based Solutions
promote transformative change?
(2024)



Foresight Workshop on nature-based
solutions and transformative change:
Exploring future research horizons
(Dec 2025)

Within this context: BiodivTransform Call (2024-25)

Context & objectives



Within this context: BiodivTransfrom Call (2024-25)

Quick overview of the results of the BiodivTransform Call



BiodivTransform Project catalogue

Information about the BiodivTransform
Call process and overview of the 35
projects funded by the call

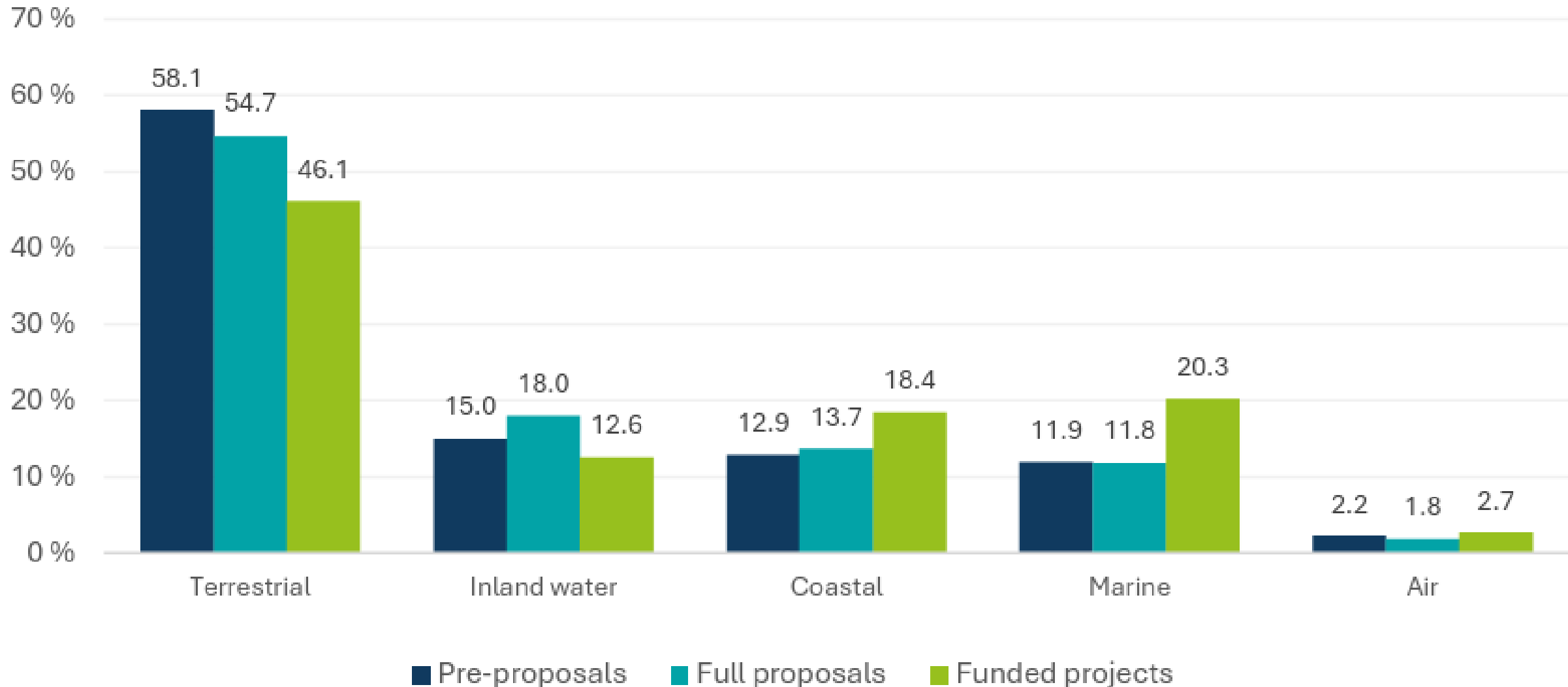
You can find the catalogue as well as all
the other mentioned resources on our
website:

<https://www.biodiversa.eu/library/>

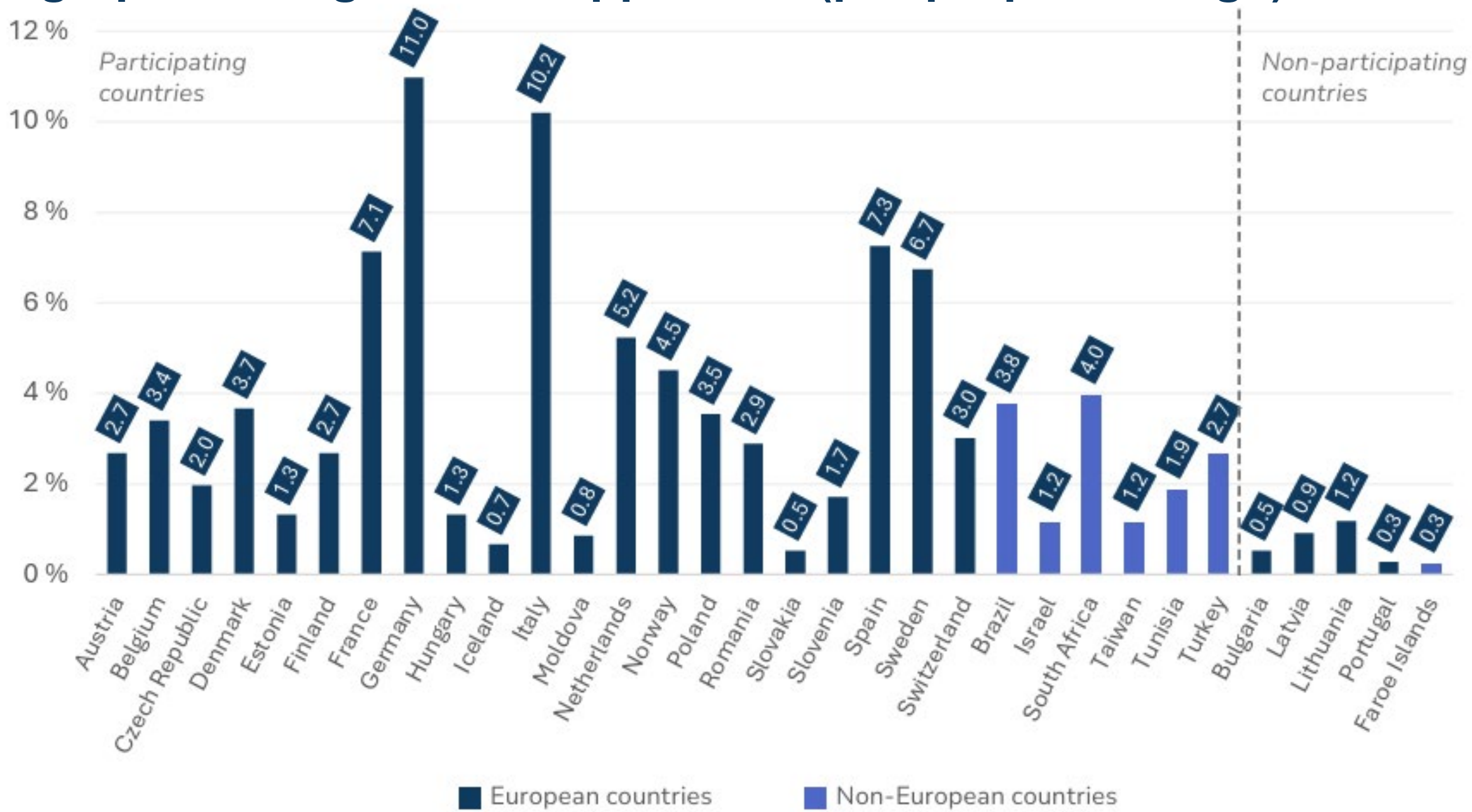


Studied environments*

*A proposal may address more than one environment

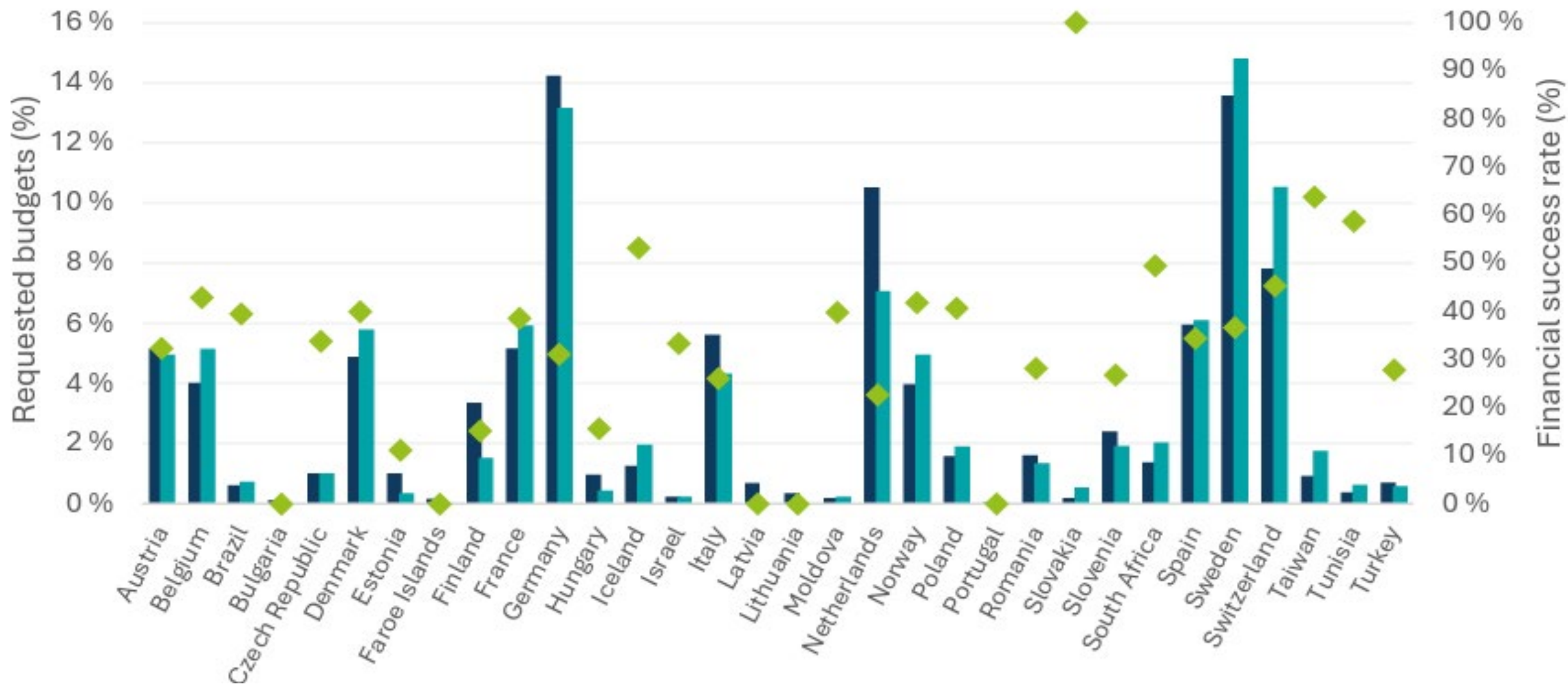


Geographical origin of the applicants (pre-proposal stage)



Success rate per country

Percentage of budgets requested at the full-proposal stage (step 2) and after selection (funded projects) for each participating country, together with the corresponding financial success rate



Welcome words from the European Commission

Bénédicte Blaudeau, DG ENV
Bastian Bertzky, DG RTD

Keynote speech

Transformative change, biodiversity, science – Our next move

*Jerneja Penca, Science and Research Centre Koper, BiodivTransfrom EvC
member, Slovenia*

Why this meeting matters?

- A community of inquiry with plural perspectives
- Intellectual effort on transformation and biodiversity
- Courage of the call



Vista Alegre collection „Vida Alegre“

What these projects represent?

- A preview of a new operating system for society and a roadmap for its transformation from where we are today
- In research, biodiversity is an organizing principle for rethinking society

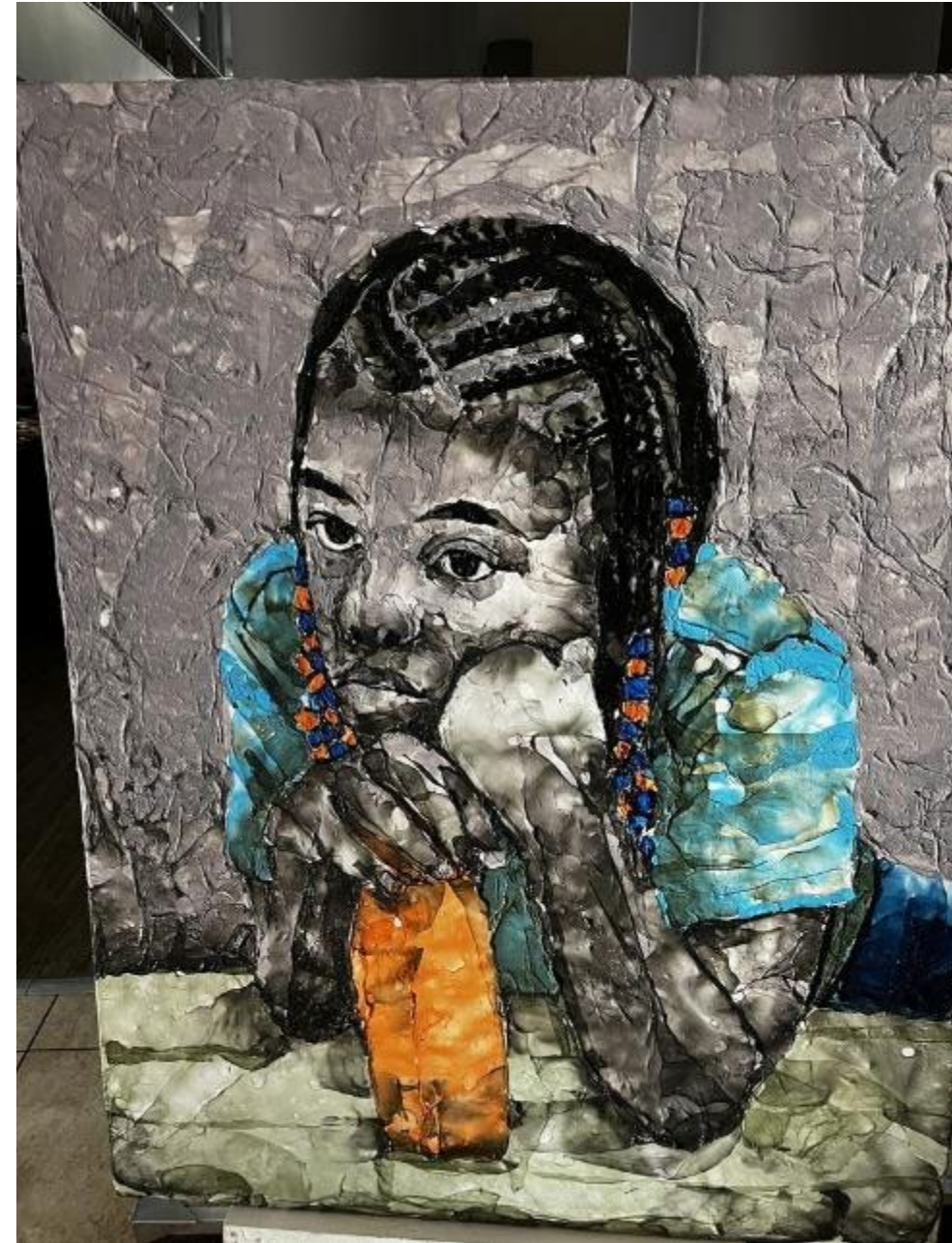
*Scene from Monterey bay Aquarium
Forest strawberries
Work by Sonia and Robert Delaunay*



Engaging with the broader knowledge base

- The IPBES *Transformative Change Assessment + Nexus*
- Why does biodiversity continue to decline and what would be required not only to slow that decline, but to halt and reverse it?

*Work by Imizwa Yami (My feelings)
by Mbongeni Buthelezi*

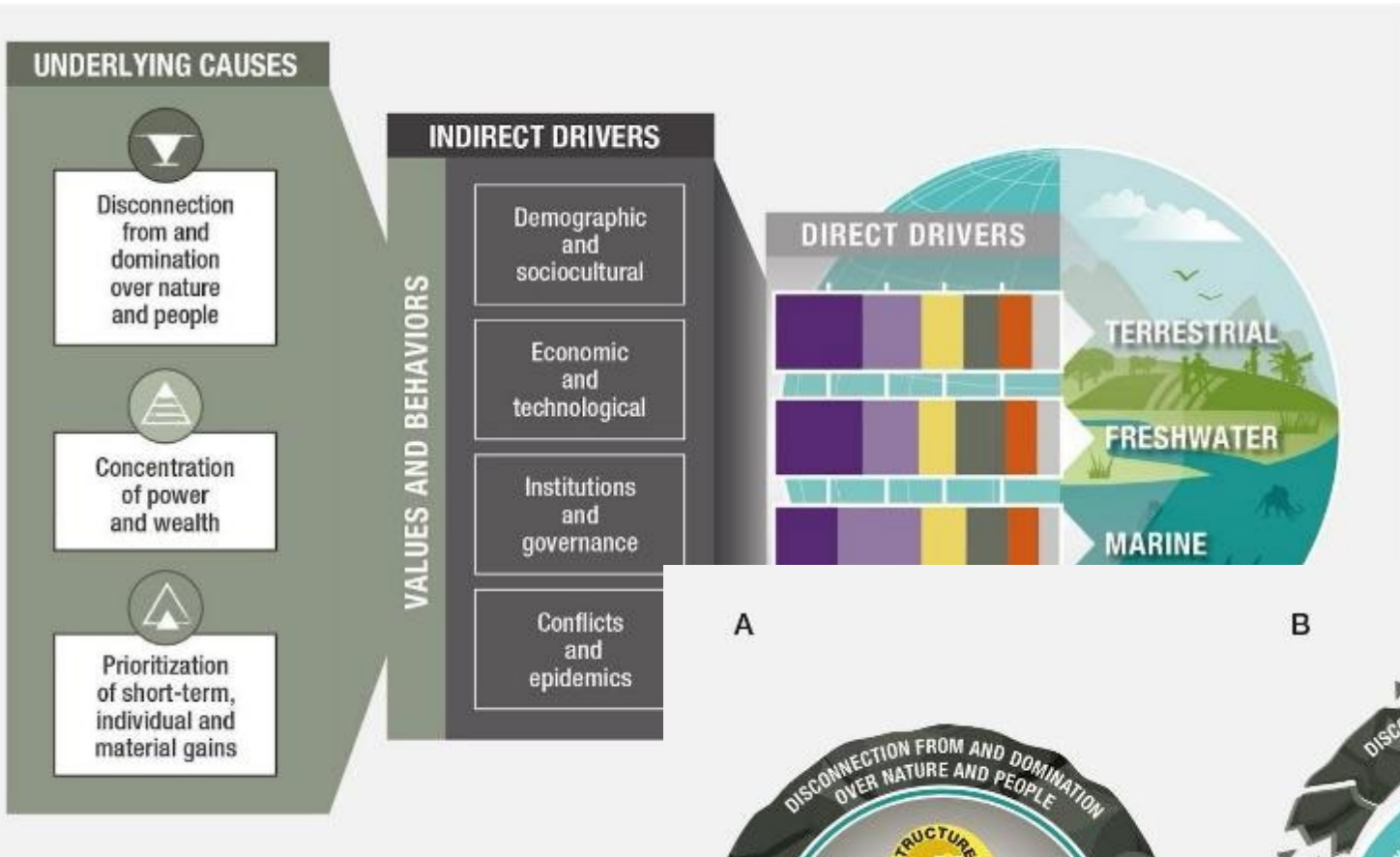


Ways of engaging with the broader knowledge base

- **Build on it** – to add nuance from specific contexts or sectors, and relate to biodiversity outcomes
- **Move beyond** – to produce new knowledge on transformative change
- **Challenge it** – to reveal blindspots, marginalizations, key factors or interactions
- Do not reinstate what we know

'Archi/Tree/tecture', Lithuanian Pavilion at Venice Biennale 2025





IPBES (2024) Summary for policymakers, Figure 1 and 2



Studying transformations and practicing it

- Experimentation (and Security)
- Participation (and Authenticity)



*Embroidery by Safaa Surour, Bait Al
Zubair museum*

Hopes for transformative research

- Be moderate in quantity
- Be ambitious in impact, especially by cultivating the “social soil”
- Be part of the system, even if incredibly complex
- Be collaborative and generous

*Street installation,
Marseille*



Presentation of funded projects

FUNDED PROJECTS PRESENTATION - SESSION 1

*Moderated by Mariana Walter, Institut Barcelona d'Estudis Internacionals,
BiodivTransform EvC member, Spain*



MARE-WIND - Biodiversity and Offshore Wind: Understanding Transformative Impacts on Marine Ecosystems

Krishna Das – University of Liège

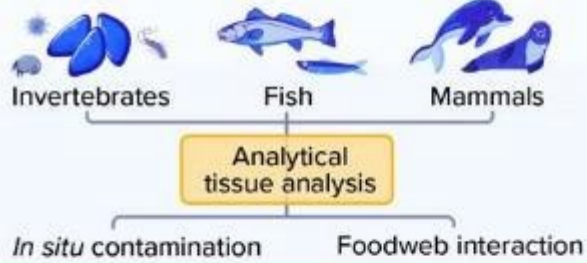
*Shahid Islam, Gilles Lepoint, Thierry Jauniaux (ULiège),
Tomas Moe Skjølsvold (NTNU)*

*Joseph Schnitzler, Nina Maurer, Ursula Siebert (TiHo)
Jan Reubens, Klaas Deneudt, Elizabeth Debusschere (VLIZ)
Lotte Pohl (VLIZ, UGhent), Dries Bonte (UGhent)*



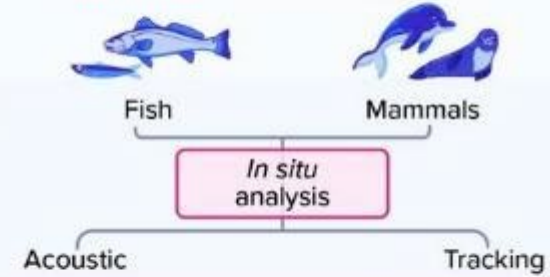
RQ1

How do artificial reefs formed by wind farm foundations influence **trophic interactions, contaminants dynamics, and CRM bioaccumulation** in marine organisms?



RQ2

How do electromagnetic fields from OWF subsea power cables affect **biodiversity movement patterns and behavior** of marine species?



RQ3

What are the institutional and practical **barriers to developing transformative metrics for biodiversity-conscious OWF governance**?



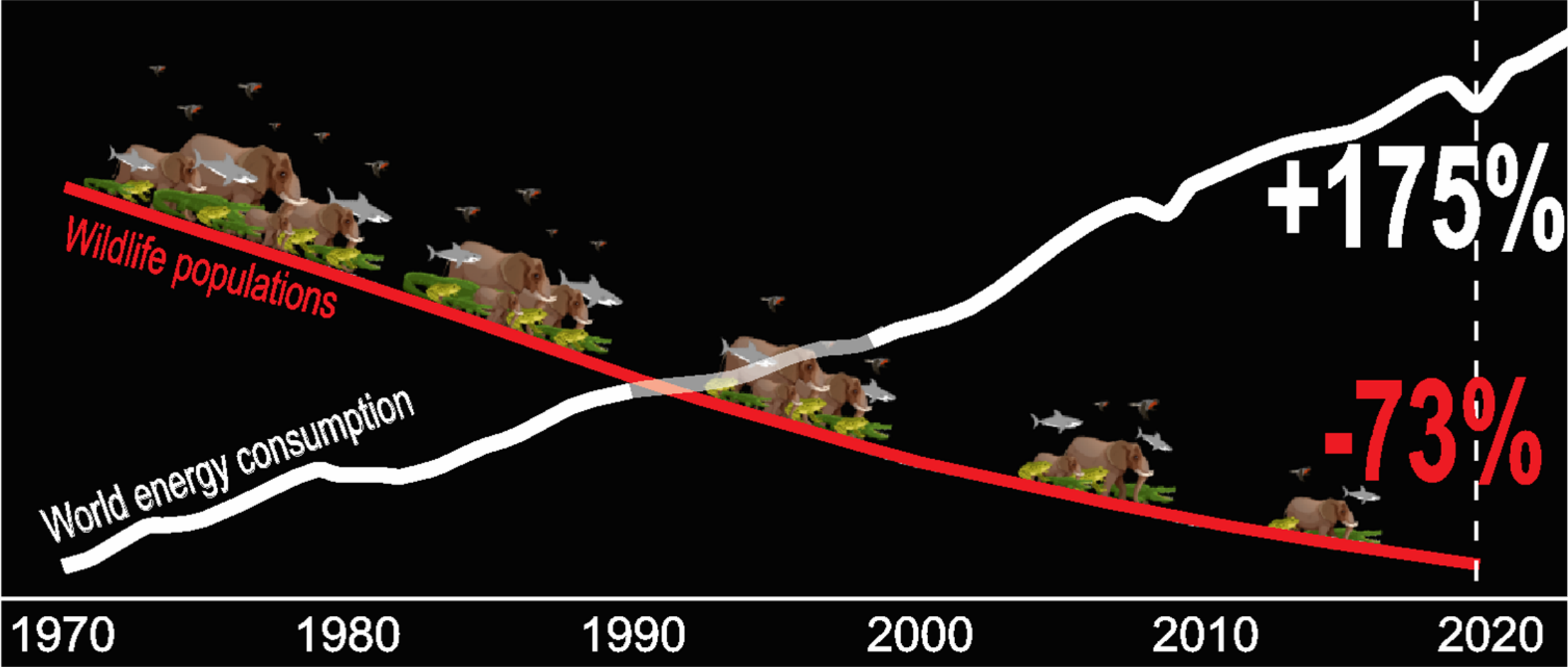
BRET: Evidence-Based Strategies for a Biodiversity-positive Renewable Energy Transition

By Hongxiao Jin (Sweden)

Team: Begoña Farizo (Spain),
Elnaz Neinavaz (Netherlands),
Boris Boincean (Moldova),
Žiga Malek (Slovenia),
and 27 other colleagues



Towards a biodiversity-positive energy transition





BIOGAIN

Enabling biodiversity-positive transformation of energy planning towards climate neutrality

By Brady Mattsson (presenter), Alexandra Jiricka-Pürner*

*Project Coordinator

Partners:

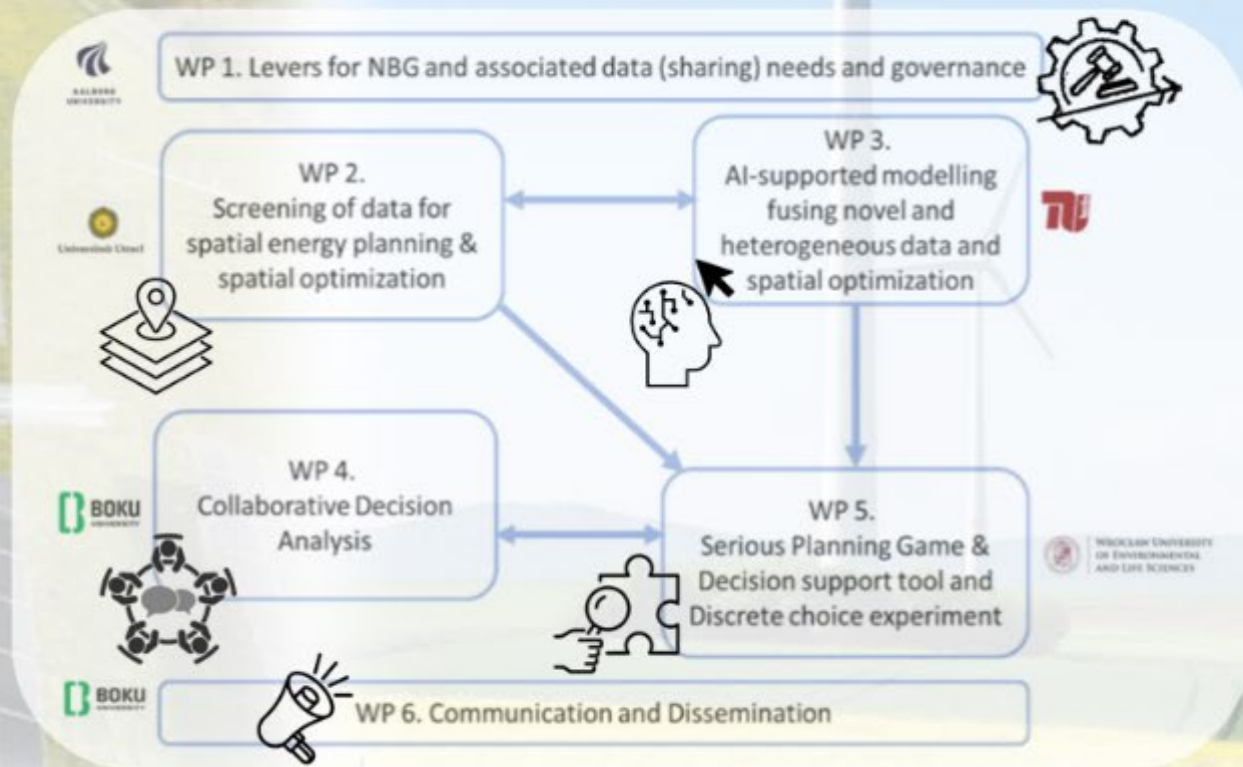


Funders:



• How can we foster **transformation** to biodiversity-net-gain in spatial energy planning?

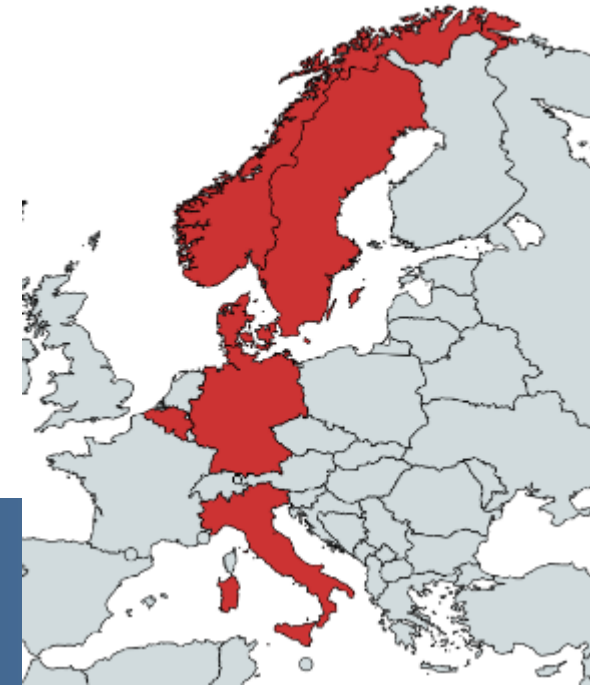
- *What is the role and importance of AI as a lever in this context?*
- How does novel data on biodiversity influence decision-making in energy planning?

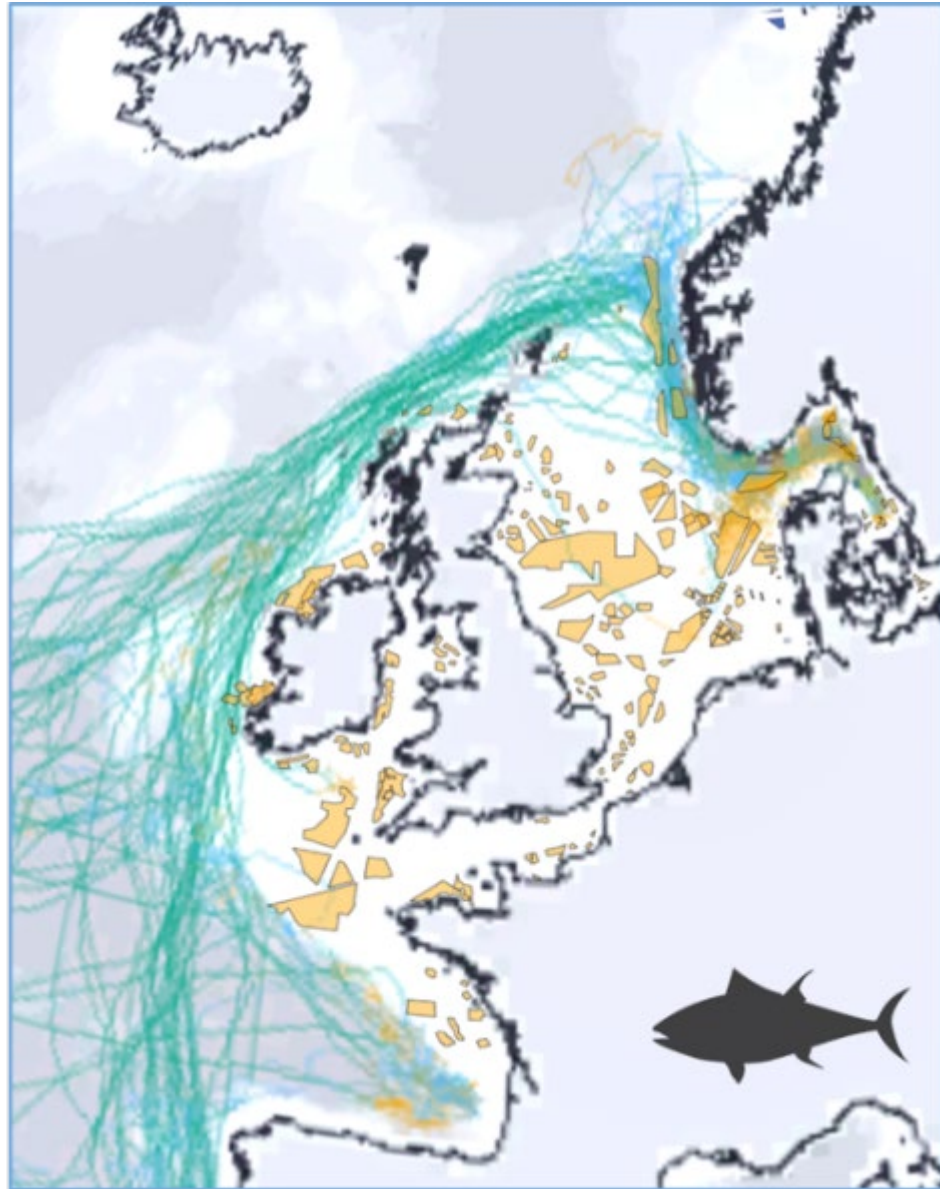




UrbanOcean: Urbanization of the sea - assessing and managing the impact of Offshore Wind developments on open ocean biodiversity

By *Gustav Hellström, SLU, Sweden*





TRANS4BIO – Integrated Energy Transition Across Scales for Climate-Resilient, Nature-and-People Positive Biodiversity Pathways

Adis Dzebo, Senior Research Fellow, Stockholm Environment Institute

Johanna Hedlund, Senior Research Fellow, Stockholm Environment Institute

Consortia:

Stockholm Environment Institute HQ Office, Sweden

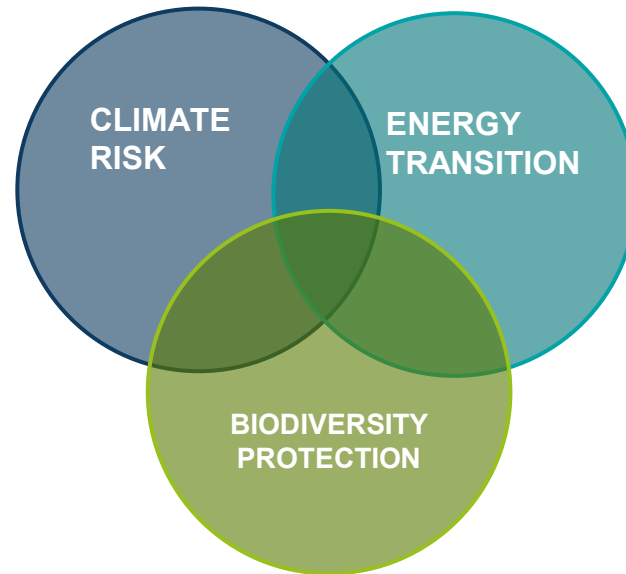
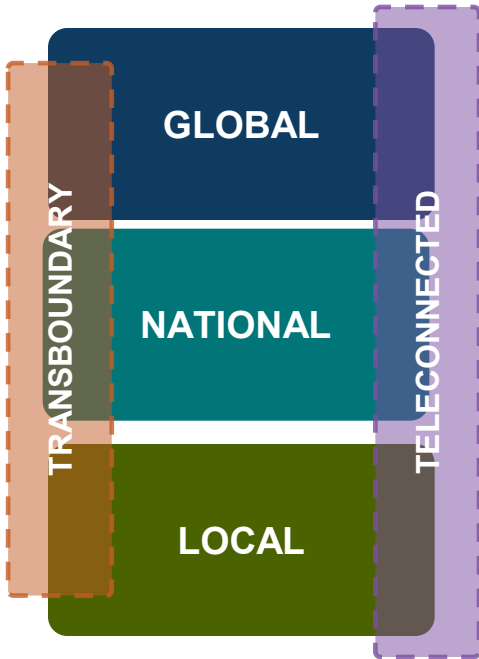
Stockholm Environment Institute Tallinn Office, Estonia

German Institute of Development and Sustainability (IDOS), Germany

University of Pretoria, South Africa & University of the Western Cape, South Africa

The Climate–Energy–Biodiversity Complex: Socio-Economic & Governance Gaps

GOVERNANCE SCALES



COMPLEXITY PROPERTIES

Cross-scale interactions

Global commodity demand → Teleconnected risks □ local biodiversity impacts; international climate targets → EU Strategy Alignment → National siting → Local Implications

Non-linearity and cumulative effects

Thresholds, cascades, extremes, compounding risk, tipping dynamics threaten habitats at scale preventing marginal and gradual improvement

Temporal effects

Infrastructure lock-in, fast climate targets (e.g. GST), Crisisfication, Increased decision-making speed vs. Poor deliberation Slow onset risks and ecological recovery

KNOWLEDGE AND DISCOURSE GAPS

Scope

Increase in Scale, Speed and Spatial Impact on Land and at Sea

Scale of Analysis

Spillover effects – System-level approaches

Anticipatory Policymaking and Governance

Accepting and dealing with incoherence and trade-offs. Alleviation of adverse outcomes on the most vulnerable

JustBioSolar: Green Energy Transitions in Europe - Impacts on Biodiversity, Landscapes and Justice

By *Iven Froese (ZALF)*

Lasse Loft (ZALF), Unai Pascual (BC3), Zuzana Harmackova (CzechGlobe), Peter Verburg (VUA), Matthias Bürgi (WSL), Torsten Krause (LU), Daniele Codato (UNIPD)

With funding from the:





FUNDED PROJECTS PRESENTATION - SESSION 2

*Moderated by Osamu Saito, Institute for Global Environmental Strategies,
BiodivTransform EvC member, Japan*

ACT: Advancing transformative governance through Transboundary conservation and collaborative learning

Maja Vasiljević (NINA)

Partners:

Norwegian Institute for Nature Research (NINA, Norway)

Institute of Landscape Ecology Slovak Academy of Sciences (ILE SAS, Slovakia)

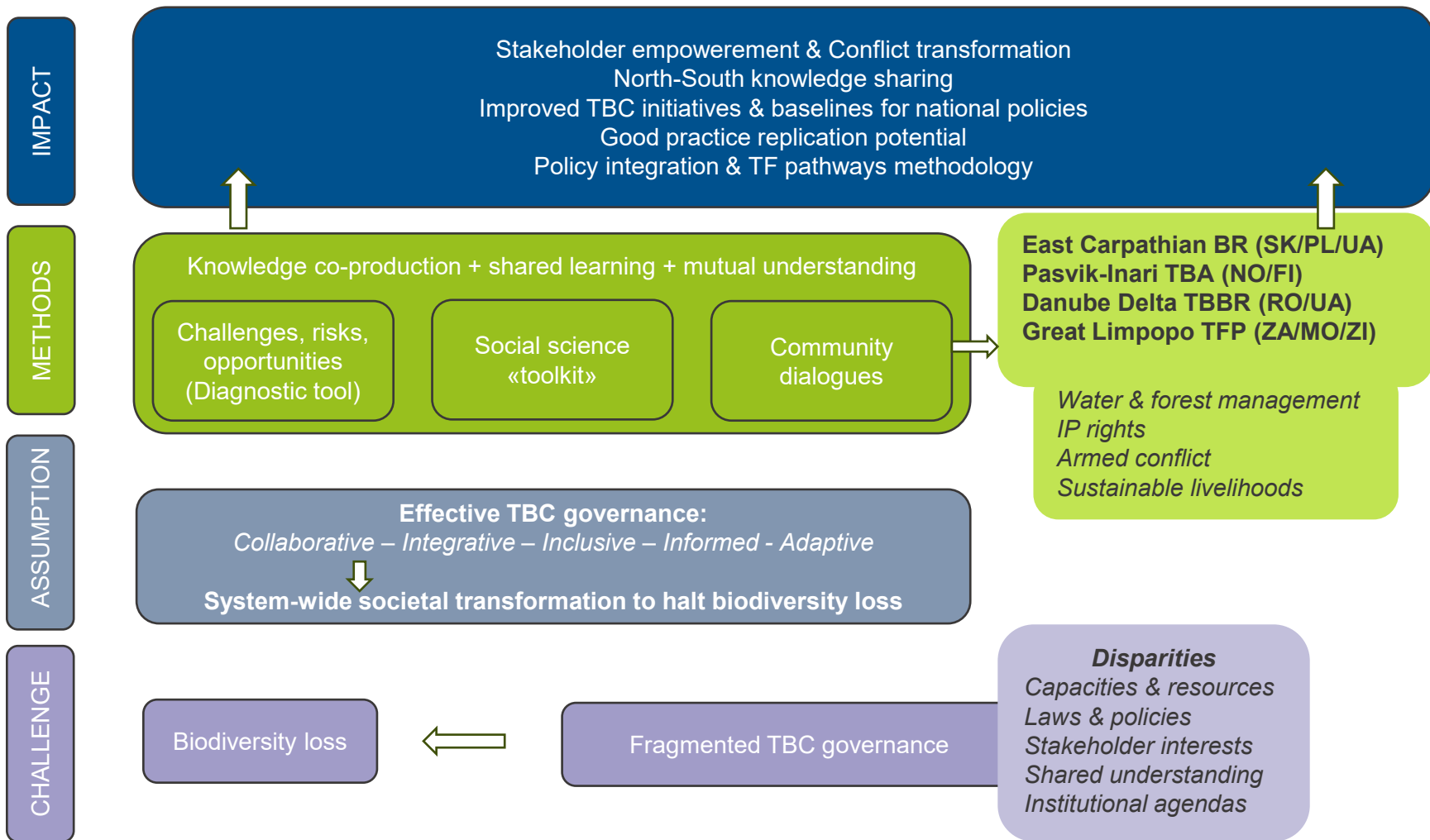
European Regional Centre for Ecohydrology PAS (ERCE PAS, Poland)

University of Venda (UniVenda, South Africa)

Fundatia Central National Pentru Dezvoltare Durabila (CNDD, Romania)

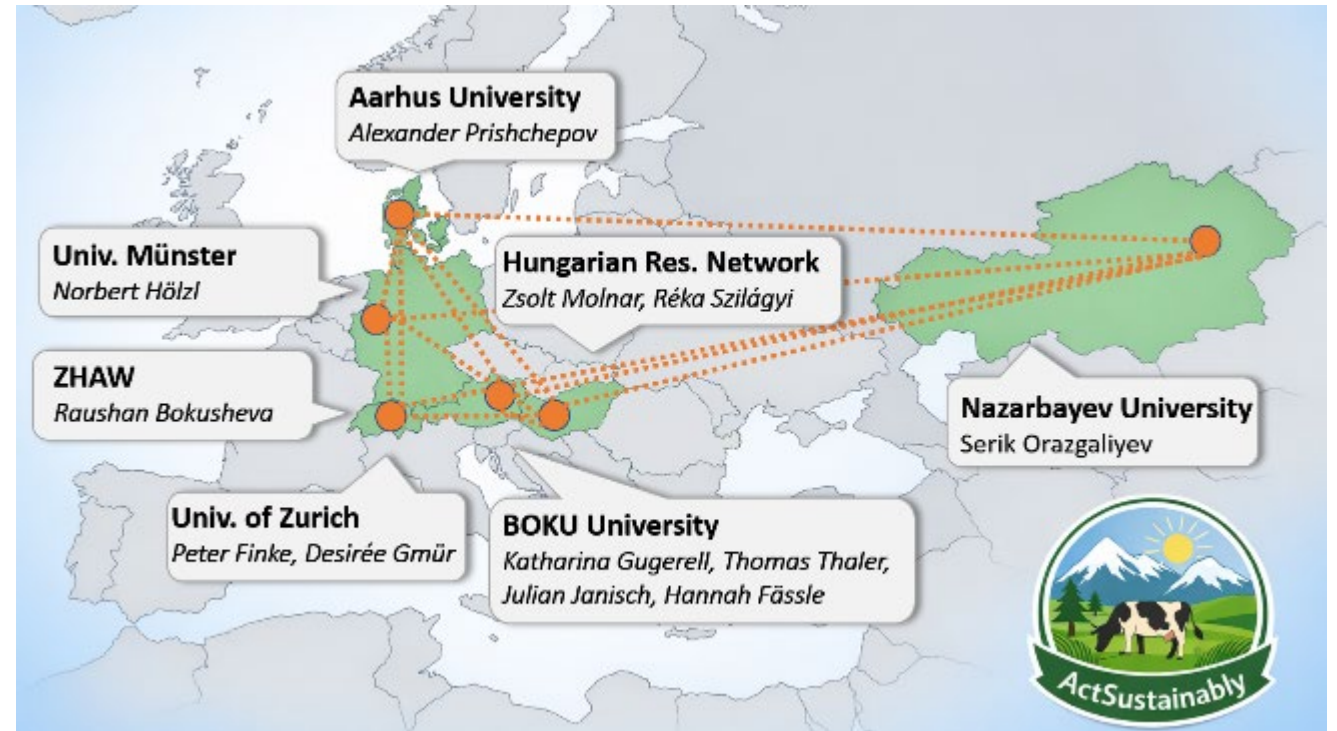
GreenFormation Kft. (GF, Hungary)

From fragmented transboundary governance to societal transformation



ActSustainably Enabling Transformative Actions to Leverage Sustainability of Eurasian Grasslands

By *Katharina Gugerell*



To Save Grasslands – We Need To Go Deeper





FLOODTRAIN – From knowledge to action: empowerment and training of floodplain restoration managers

Astrid Schmidt-Kloiber



From controlling rivers to working with them – *Restoring connections restores benefits*



- Supporting EU restoration goals
- Building professional capacity
- Delivering benefits for society








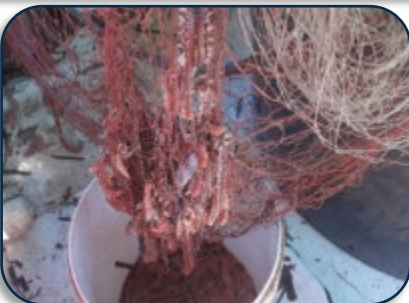
©MERLIN

WORMSOUT PLUS - Bearded Fireworm Invasion: Underwater Monitoring, Biodiversity And Social Impacts, Potential Industrial Application And Mitigation Strategies

By Daniela Giannetto

OGS – National Institute of Oceanography and Applied Geophysics (Italy) (Coordinator); University of Catania (UNICT, Italy); University of Modena and Reggio Emilia (UNIMORE, Italy); Aix-Marseille University (AMU, France); University of La Laguna (ULL, Spain); Jožef Stefan Institute (IJS, Slovenia); National Institute of Marine Sciences and Technologies (INSTM, Tunisia); Muğla Sıtkı Koçman University (MSKU, Türkiye); QTIBIA (Romania)

WHAT WE KNOW SO FAR....

| | | |
|---|--|-----------------------------------|
|  |  | ECOLOGICAL IMPACT |
|  |  | PUBLIC HEALTH IMPACT |
|  |  | FISHERY ECONOMY IMPACT |

OUR APPROACH



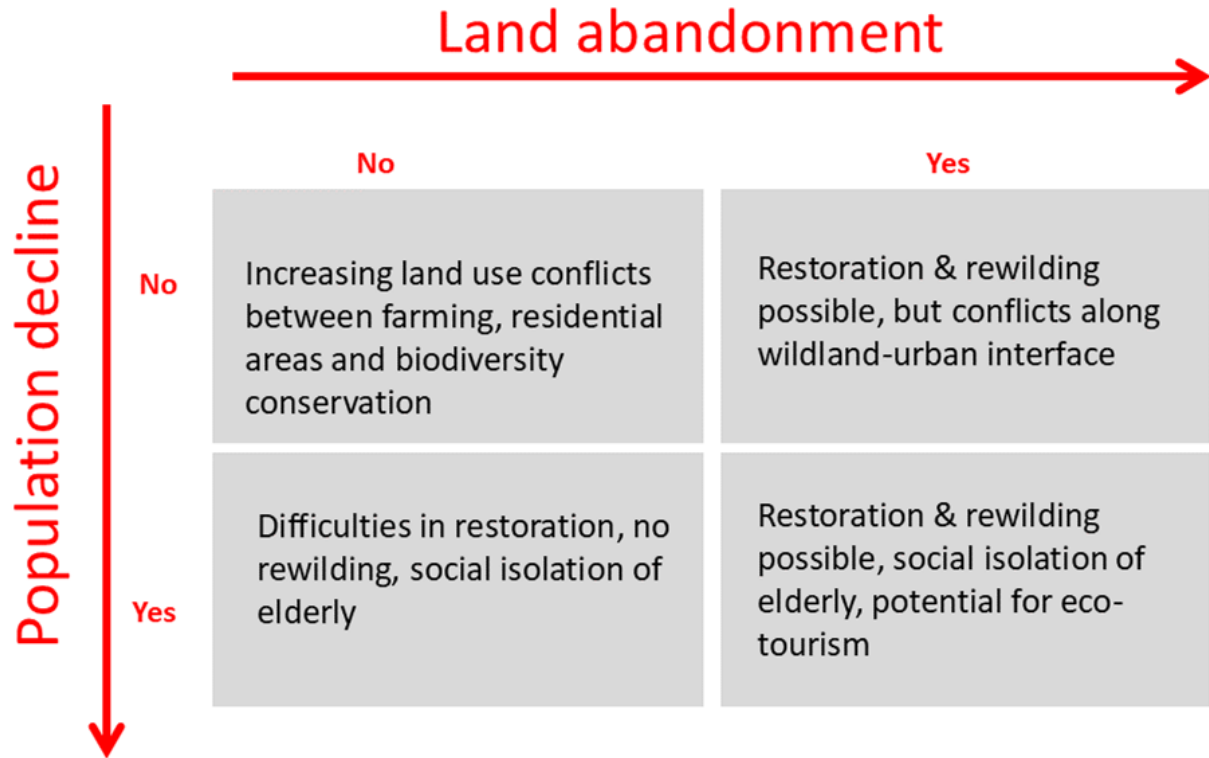
REDESIGN - Restoration and Depopulation Synergies for Nature



By *Dominik Kaim*

Jagiellonian University in Krakow, PL; KU Leuven, BE; Aarhus University DK; The Spanish National Research Council (CSIC), ES; Institute of Geography of the Slovak Academy of Sciences, SK; Research and Development Institute for Wildlife and Mountain Resources, RO; Czech Technical University in Prague, CZ

Our project aims to provide an interdisciplinary perspective on depopulation taking place in the EU, as a key element of transformative change in socio-ecological rural systems.



ICE BRIDGE: Bridging Ice Climate Technologies and Governance for Biodiversity in the Arctic

By *Romain Chuffart*

Stefansson Arctic Institute, University of Akureyri (Iceland)

Nord University (Norway)

Arctic Centre, University of Lapland (Finland)

Húsavík Research Center, University of Iceland (Iceland)

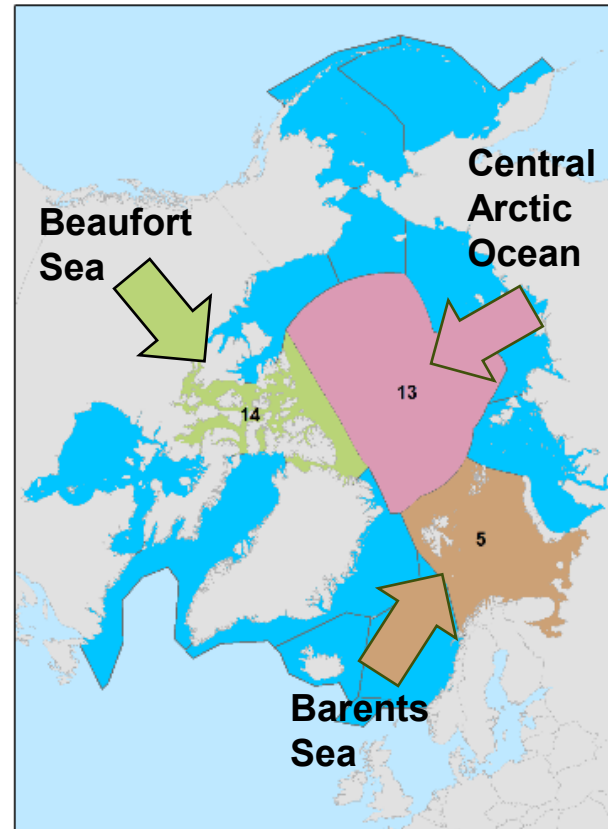
Alfred Wegener Institute, Helmholtz Centre for Polar and Marine Research (Germany)

Autonomous University of Barcelona (Spain)

ICE BRIDGE: Bridging Ice Climate Technologies and Governance for Biodiversity in the Arctic

MAIN OBJECTIVE:

To develop a knowledge/science-based, justice-centred governance framework for Arctic sea ice climate interventions to protect biodiversity



Large Marine Ecosystems Classification
(Protection of the Marine Environment
Working Group, Arctic Council)

EXPECTED IMPACTS

1. **TRANSFORMATIVE AND ANTICIPATORY GOVERNANCE**
(Responsibility Framework)
1. **BIO-CLIMATE SCENARIOS**
Mapping “safe thresholds” for sea ice restoration to assess biodiversity impacts
1. **CLIMATE JUSTICE IN ACTION**
Including knowledge co-production into climate technology

Expected Scientific Outcomes

Peer-Reviewed Articles | Policy Briefs
Responsibility Framework for Multi-level
Governance

PaCE – PEACE AND ECOLOGY IN DISPUTED SEAS

By Prof. Dr. Denise Margaret S. Matias
Eberswalde University for Sustainable Development (Germany)

Prof. Ting-Chun Kuo
National Taiwan Ocean University (Taiwan)

Prof. Aisa Manlosa
Universiteit Leiden (Netherlands)

Xenophobia ☐ Sinophobia



A restaurant in Beijing during the start of the UNCLOS arbitration case



A restaurant in Vietnam



Gaven Reef Artificial Island by China on the South China Sea / West Philippine Sea

FUNDED PROJECTS PRESENTATION - SESSION 3

Moderated by Ronit Amit, Centro de Investigación en Biodiversidad y Ecología Tropical, BiodivTransform EvC member, Costa Rica



Participatory Engagement for Adaptation and Conservation Efforts (PEACE)



How do we live with wildlife in a changing world?



Participatory monitoring



Deliberation



Implementation



COEXHUB Leveraging transformative capacities for the governance of human-bear-coexistence in Europe. An integrated socialecological-institutional approach

By Stefano Civitarese Matteucci, University of Chieti-Pescara, Italy

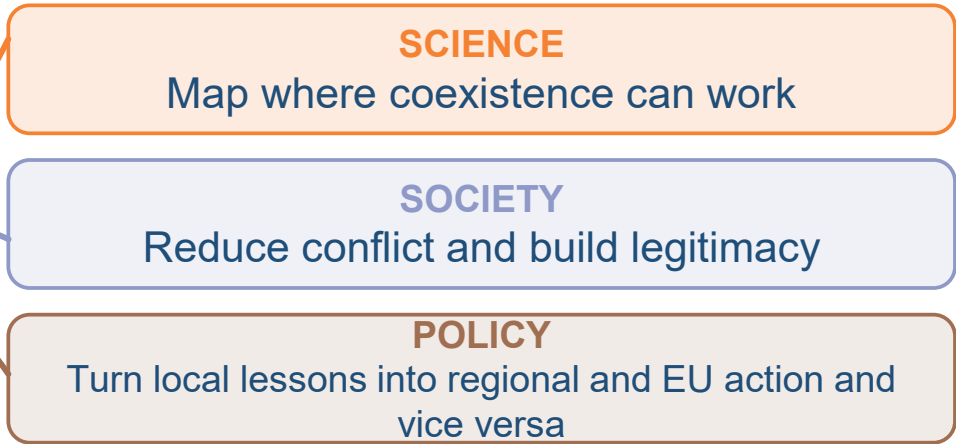
- Università di Roma La Sapienza
- Eidgenössische Technische Hochschule Zürich
- University of Ljubljana
- University of Freiburg
- Agencia Estatal Consejo Superior de Investigaciones Científicas (CSIC)

Three bear landscapes. One European question.



Can Europe learn to live with bears again?

Three cohabitation realities. One European laboratory for transformative change.



ITALY | APPENNINES
50-60 bears
Prevent extinction

SPAIN | CANTABRIAN MTS
~370 bears
Enable expansion

SLOVENIA | DINARIC ALPS
~1,000 bears
Manage success

BiodiverCities: A Roadmap for Fostering Human Wildlife Coexistence in Greening Cities



FORMAS



With funding from the:



FONA
Research for Sustainability



fwo





Some urban crows drop hard nuts near pedestrian crossings, letting cars crack shells, then safely collect pieces during red lights.

National Park Service
U.S. Department of the Interior
Cabrillo National Monument

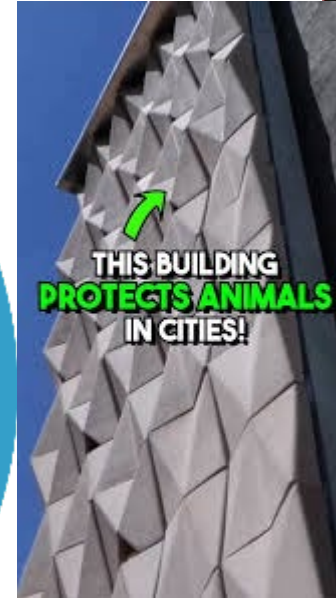
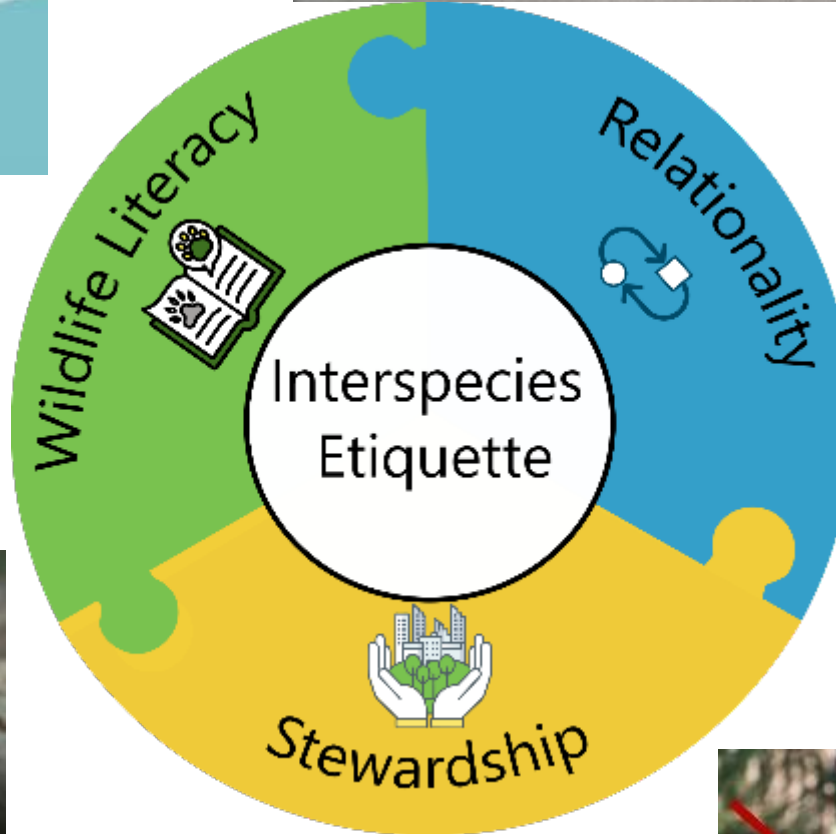
In collaboration with the City Nature Challenge...

Capture San Diego's Incredible Biodiversity

BioBlitz

at Cabrillo National Monument

Saturday, April 25th
8:30 am - 3:20 pm



Rise in anti-badger misinformation fuels attacks on nature



TIDELINES - Transformative change and Innovations for Diverse beach Ecosystems and sustainable Livelihoods through Enhanced wrack maNagEment Strategies

By Jan Macher

Naturalis Biodiversity Center (Netherlands); **Nelson Mandela University** (South Africa); **Leipzig University** (Germany); **Syddansk Universitet** (Denmark); **Universidad de Cádiz** (Spain); **University of Salento** (Italy); **Stazione Zoologica Anton Dohrn** (Italy); **Universidade Estadual do Norte Fluminense Darcy Ribeiro** (Brazil); **Universidade Federal do Espírito Santo** (Brazil)

TIDELINES





By Loïc Sanchez, Postdoctoral Researcher at Nord University

Institut de Ciències del Mar, Università di Pisa, Université de Montpellier, Nord University, University of Iceland, Universidade Federal do Oeste do Para, University of Zululand, Nelson Mandela University, BlueSeeds, University of Sfax, Istanbul University, Gothenburg University



biodiversa+
European Biodiversity Partnership

PathChange – Pathways of constructive conflict transformation to foster transformative change in wetland restoration

By Diana Hummel

Prof. Dr. Diana Hummel – Institute for Social-Ecological Research (ISOE), Frankfurt am Main, Germany

Francis Turkelboom – Eigen Vermogen van het Instituut voor Natuur-en Bosonderzoek (EV-INBO), Brussels, Belgium

Prof. Dr. Jeroen Adam, Ghent University, Ghent, Belgium

Dr. Cristian Mihai Adamescu, University of Bucharest, Bucharest, Romania

Dr. Cristina Quintas Soriano, University of Almería (UAL), Almería, Spain

With funding from the:

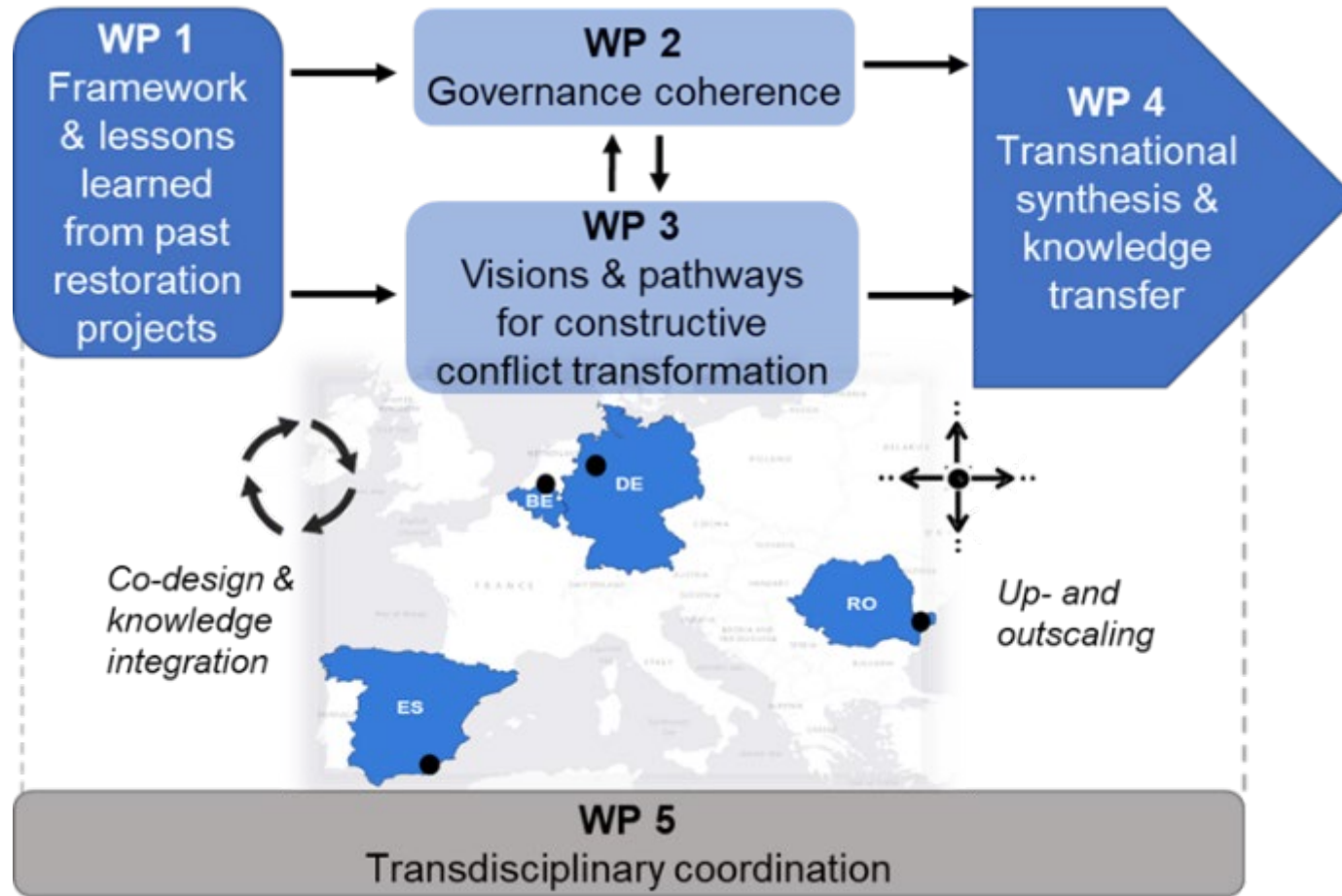


fwo

uefiscdi



Constructive conflict transformation in wetland restoration





POWERSHIFT

Understanding and Shifting Power in Biodiversity Conservation by Integrating Insights from Social Change Movements

Juliette Young, INRAE, France

Lou Lecuyer, INRAE, France

Jacqueline Loos, Universität Wien, Austria

Anna-Lena Mieke, Universität Wien, Austria

Ranjini Murali, Humboldt Universität, Germany

Laura Peirera, Stockholm University, Sweden



With funding from the:



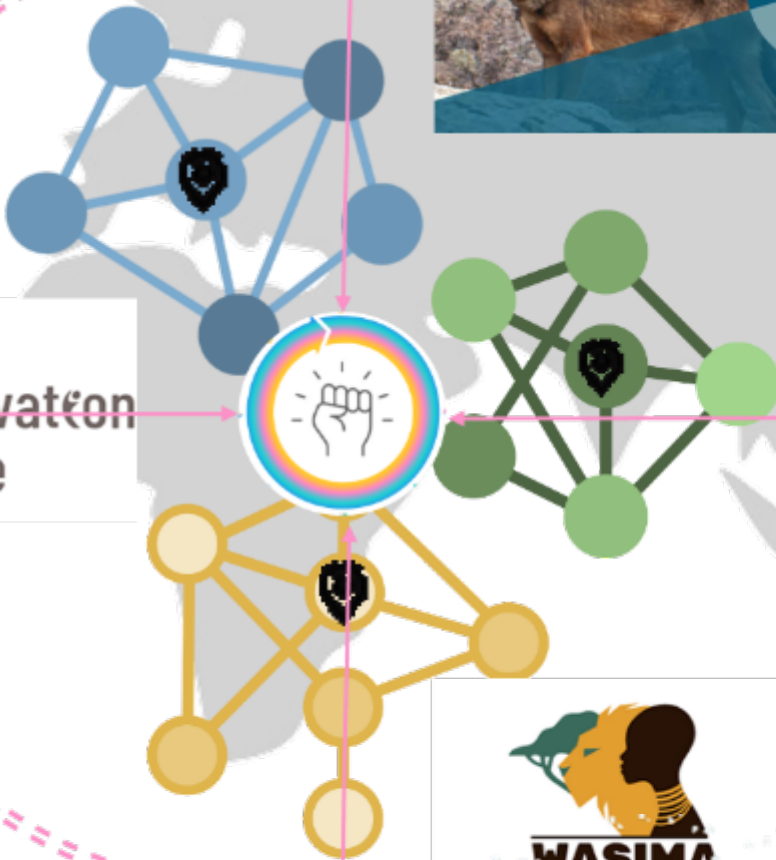
What does it take for biodiversity conservation to become a real social movement?



Building collective power through strategic alignment



Ethical Conservation Alliance



FUNDED PROJECTS PRESENTATION - SESSION 4

Moderated by Cecilia Simões, BiodivTransform EvC member, Brazil

SURPRISES: Building anticipatory governance of social-ecological tipping points in transformative change planning for ocean sustainability

By *Laura Pereira*

Centre National de la Recherche Scientifique (CNRS): Joachim Claudet, Juliette D'Anna

Stockholm University (SRC): Laura Pereira, Jean-Baptiste Jouffray, Juan Rocha

Potsdam Institute for Climate Impact Research (PIK): Sina Loriani, Jonathan Donges, Lukas Röhrich

International Union for Conservation of Nature (IUCN): Imogen Napper, Thomas Sberna

OceanHub Africa (OHA): Herland Cerveaux, Thando Mazomba, Alexis Grosskopf

Universidade de Santiago de Compostela (USC): Sebastian Villasante, Jacobo Feás, Alice Landin

University of Oslo (UO): Manjana Milkoreit

University of the Western Cape (UWC): Moenieba Isaacs

University of the Witwatersrand (Wits): Sally Archibald, Ash Maharaj



UNIVERSITY OF THE WITWATERSRAND
JOHANNESBURG

What if AMOC collapsed?

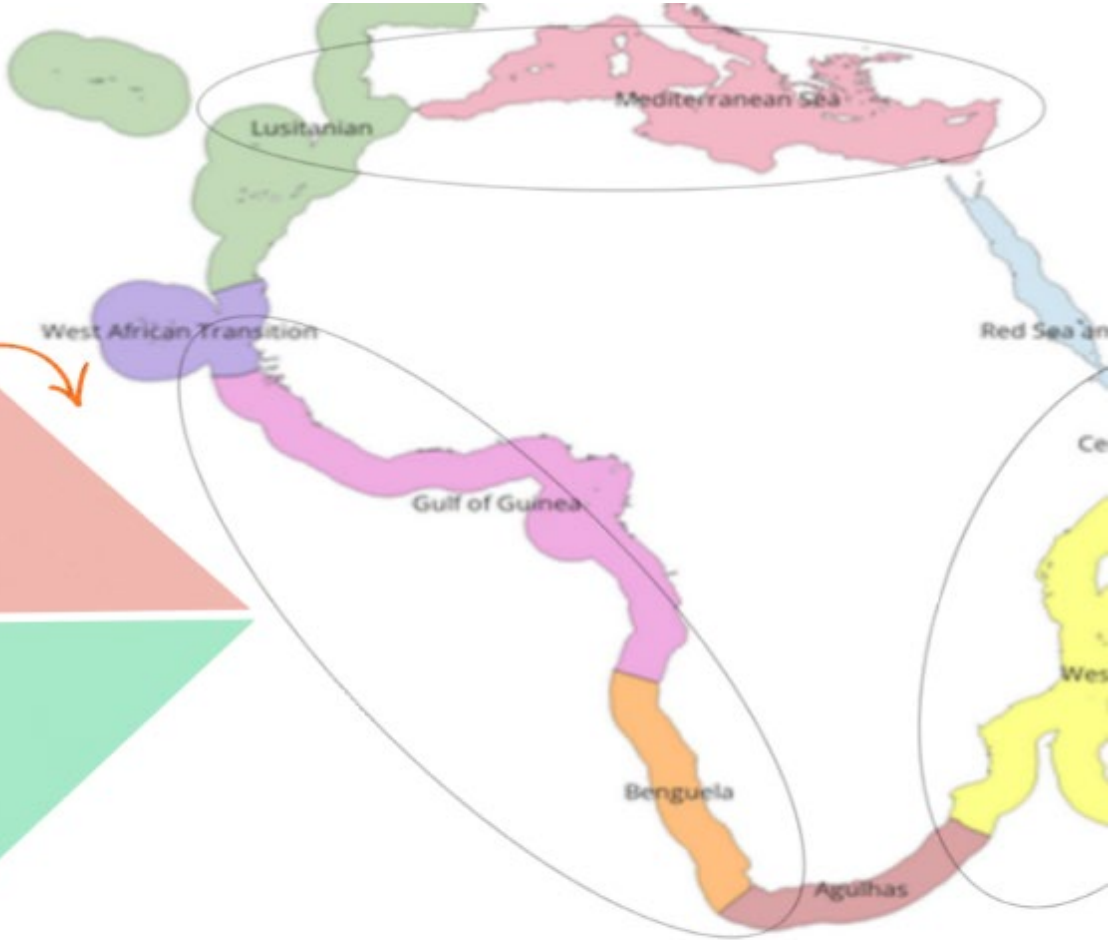
O1. Anticipating and understanding coastal and marine social-ecological tipping points across scales in African ocean basins.

O2. Building anticipatory governance to ensure that actions to achieve transformative visions are sensitive to multi-scale temporal and spatial dynamics.

**of Guinea and
l-ecological system**



**f Guinea and
-ecological system**





ATTITUDE – A transformation through improved practice: targeting urgent sustainable development needs by enabling restorative aquaculture

By Sara Hornborg, RISE Research Institutes of Sweden (coordinator)

A collaboration between Sweden, Denmark, Italy, Spain, and the Netherlands.

Partners



UNIVERSITY OF COPENHAGEN



van hall larenstein
university of applied sciences



SDU
Syddansk Universitet

Subcontractors



Länsstyrelsen
Västra Götaland



ATTITUDE

Our vision is to support both i) enhanced ecosystem services including biodiversity restoration and ii) viable, sustainable food production by generating key knowledge needed to implement restorative bivalve aquaculture practices across Europe and thereby enable the required transformative changes in bivalve aquaculture governance.

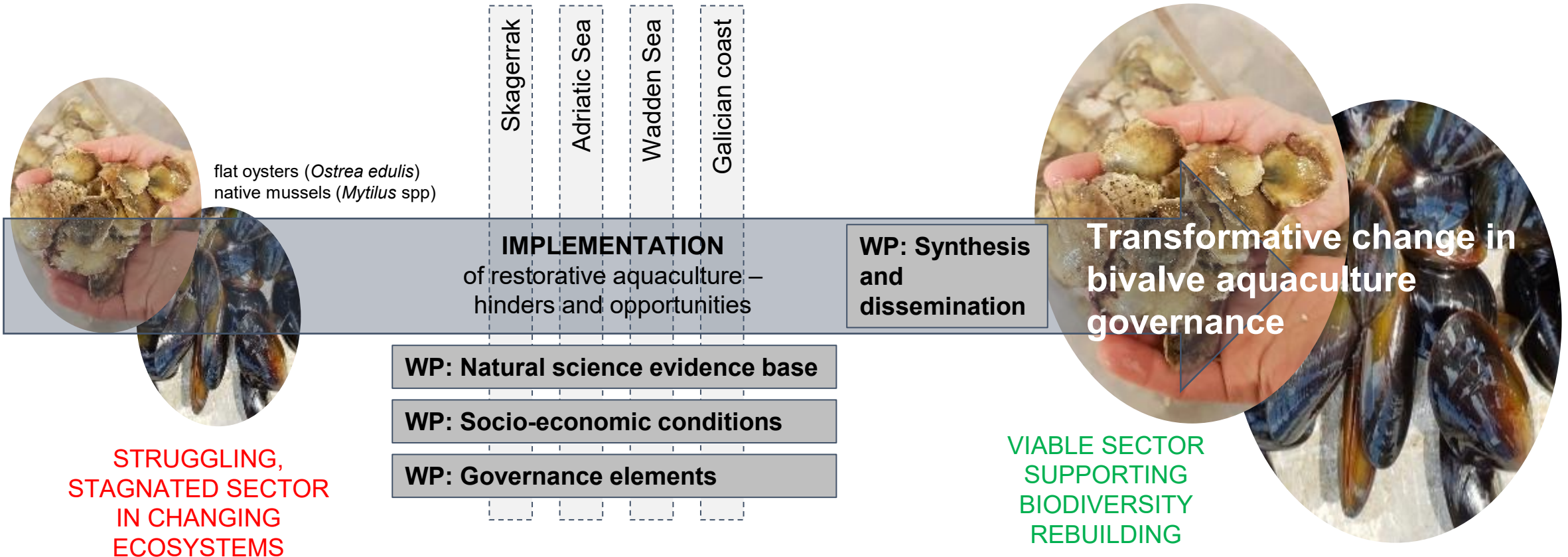


Photo credits: Åsa Strand



OpTIBES - Optimisation of Tree Species Selection for Improved Biodiversity and Ecosystem Services

By Göran Wallin

***Partners:** University of Gothenburg, Norwegian University of Life Science, University of Copenhagen.*

***Sub-contractors:** University of Rwanda, Rwanda Forestry Authority, ICRAF-Rwanda Office, Université Officielle de Bukavu, University of Burundi.*

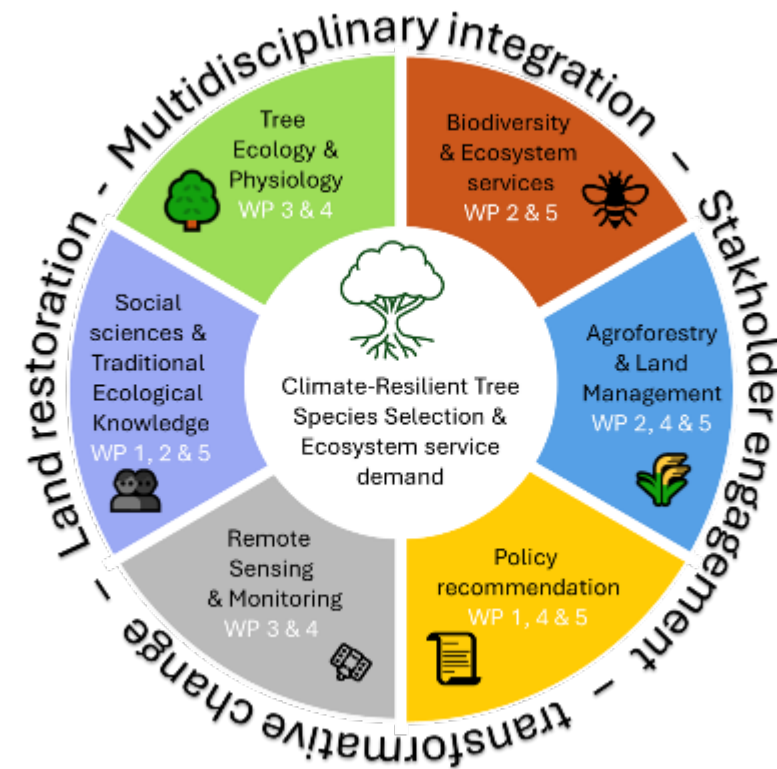
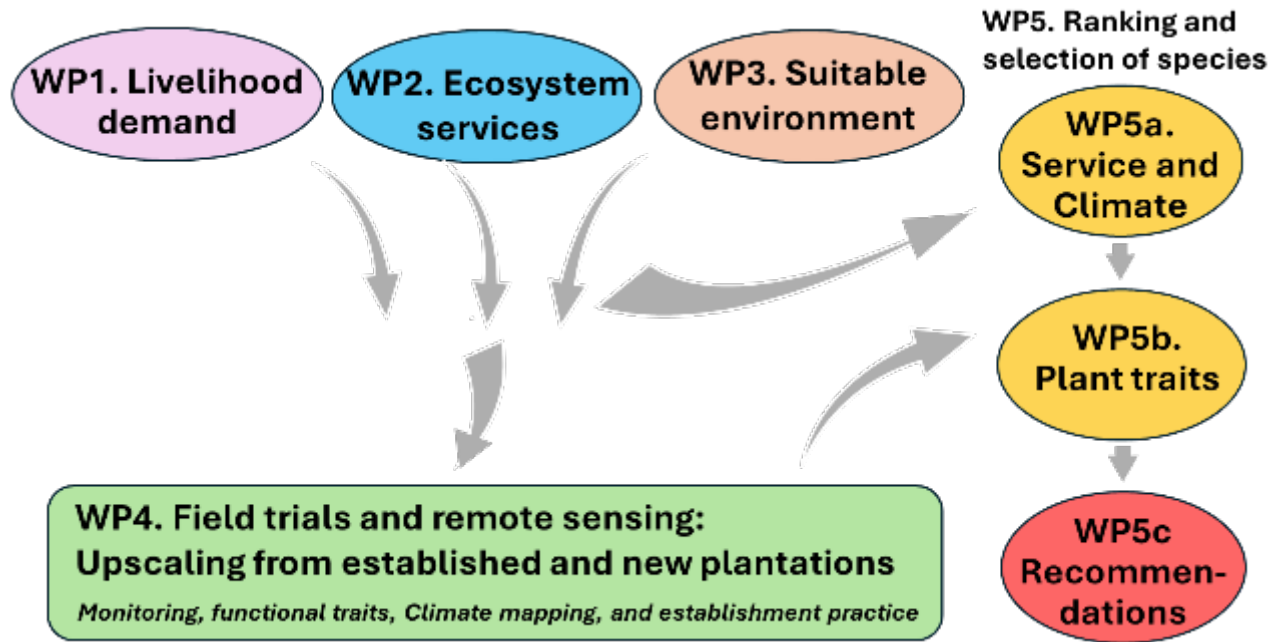
***Extended network:** University of Oxford, Dian Fossey Gorilla Fund, Rwanda Space Agency*

OpTIBES - Optimisation of Tree Species Selection for Improved Biodiversity and Ecosystem Services

The Albertine Rift



Conducted in Five Work Packages



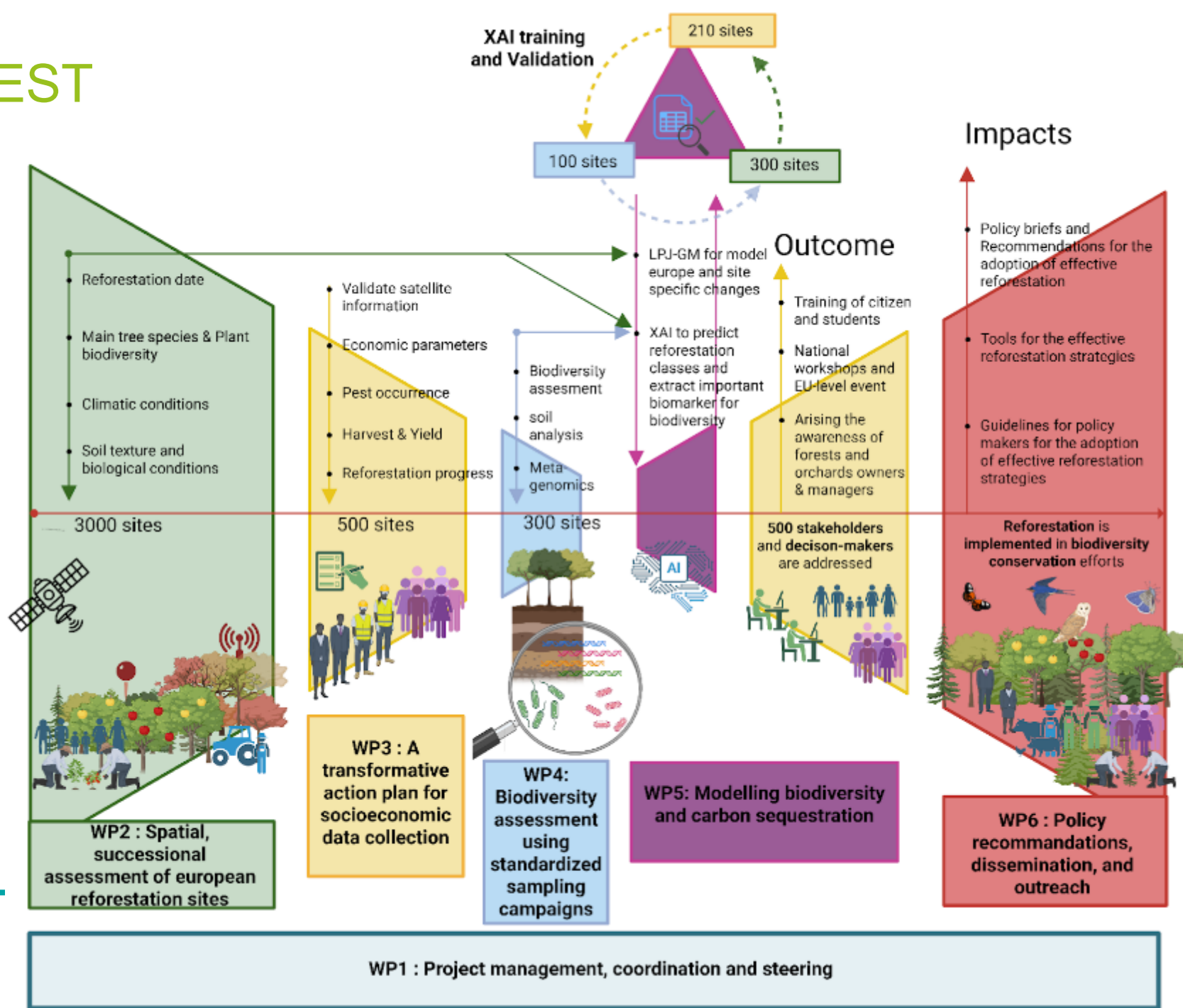
BIOREFOREST

Reforestation of forests and orchards after disturbances – A transformative action plan balancing socioeconomic and biodiversity needs

By Matthias Noll; University of Coburg



BIOREFOREST



BIODENCITY - Reversing **B**iodiversity Decline in **D**ensification Strategies using Innovative Sensing, Systemic Solutions and Data Driven **C**ity modelling for Transformative Change

By **Meta Berghauser Pont**

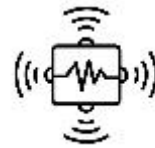
Chalmers University of Technology, Sweden; Politecnico di Milano, Italy; Delft University of Technology, Netherlands; AMS Institute for Advanced Metropolitan Solutions, Amsterdam, Netherlands; Tampere University, Finland; Municipality of Milan, Italy; City of Amsterdam, Netherlands.

BIODENCITY

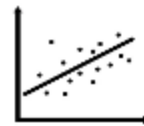
- Urban densification is widely promoted as a sustainable strategy.
- Biodiversity and densification are not necessarily contradictory.
- Biodiversity enhances human health and resilience in urban contexts.
- Evidence-based planning tools enable nature-positive urban transformations.
- Co-creation strengthens social acceptance and governance of change.



WP1 Developing a typology of urban density and urban greening



WP2 Monitoring birds, bats, insects and soil microorganisms



WP3 Understanding the role of urban density and urban greening on biodiversity



WP4 Testing planning scenarios in urban Living Labs



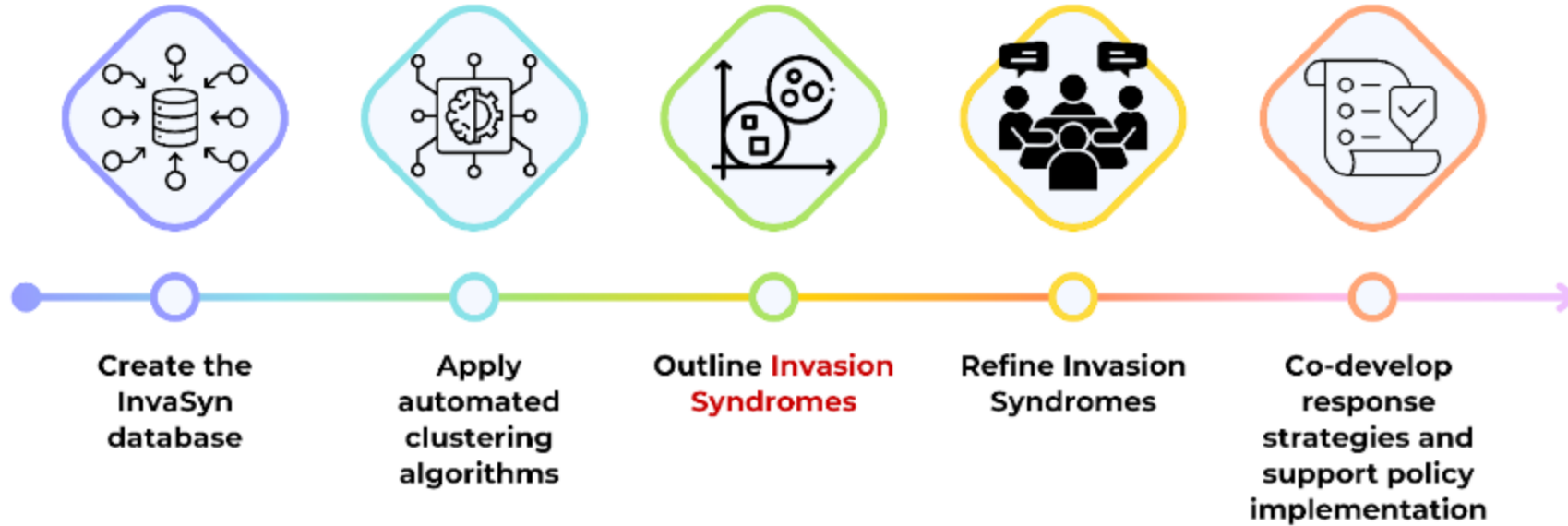
WP5 Coordination, communication and outreach



InvaSyn

Invasion Syndromes: transforming the understanding and management of biological invasions

PLANT
INVASIONS

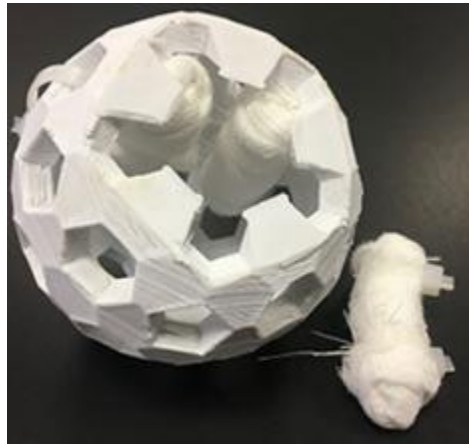


SEAWATCH – Transforming fishing vessels into stewards to protect biodiversity through the integration of eDNA metabarcoding, satellite data and AI

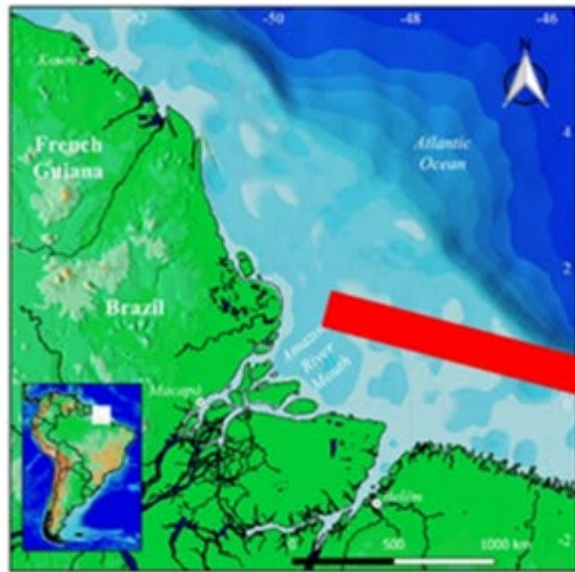
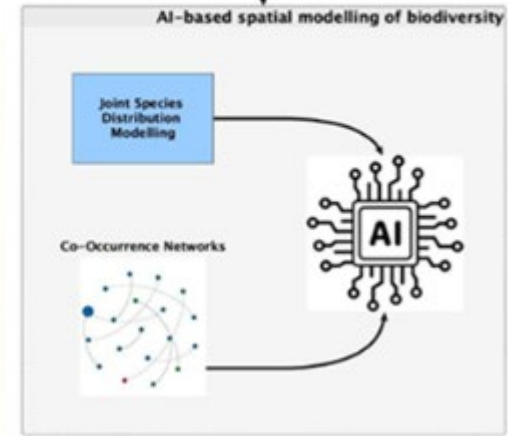
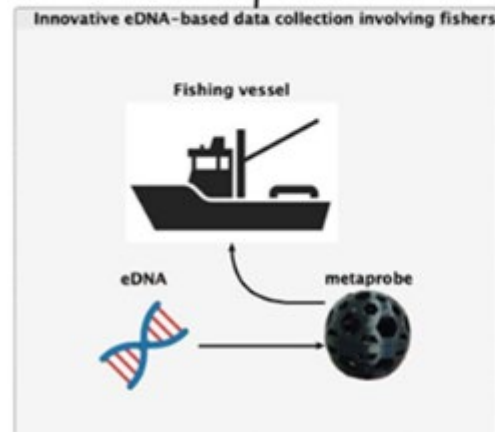
By *Nadia Marinchel*

*Italy, University of Rome Tor Vergata (UTV)
Brazil, Federal University of Ceará (UFC)
Sweden, Sveriges Lantbruksuniversitet (SLU)
WWF International*

SEAWATCH



The *metaprobe*



FUNDED PROJECTS PRESENTATION - SESSION 5

*Moderated by Isabel Mesquita, The Global Landscapes Forum, BiodivTransform
EvC member, Brazil*

Diversity in process - Towards multispecies assemblages for biodiversity governance (MultiDiv)

By Maja Schlüter, Stockholm Resilience Centre, Stockholm University (Sweden)

Francois Bousquet, CIRAD (France)

Khaled Echwikhi, Higher Institute of Applied Biology of Medenine (Tunisia)

Raphael Mathevet, CEFÉ CNRS (France)

Amade Aouatef M'charek, University of Amsterdam (Netherlands)

Nadim Tahani, University of Bochum (Germany)

Multispecies assemblages of biodiversity decline

New understanding of
entangled root causes of
biodiversity decline

Relational biodiversity
governance

MITTELMEER

Killer crabs on the plate: the arduous battle against a voracious crustacean

von Jenny Niederstadt 13. Februar 2025 • 17:46 Uhr • 4 Min.



Social-Ecological Keystone Places for Transformative Change in Safeguarding Coastal Biodiversity



By Annette Breckwoldt



Brazil



Cook Islands



France



Germany



Indonesia



Madagascar




Norway

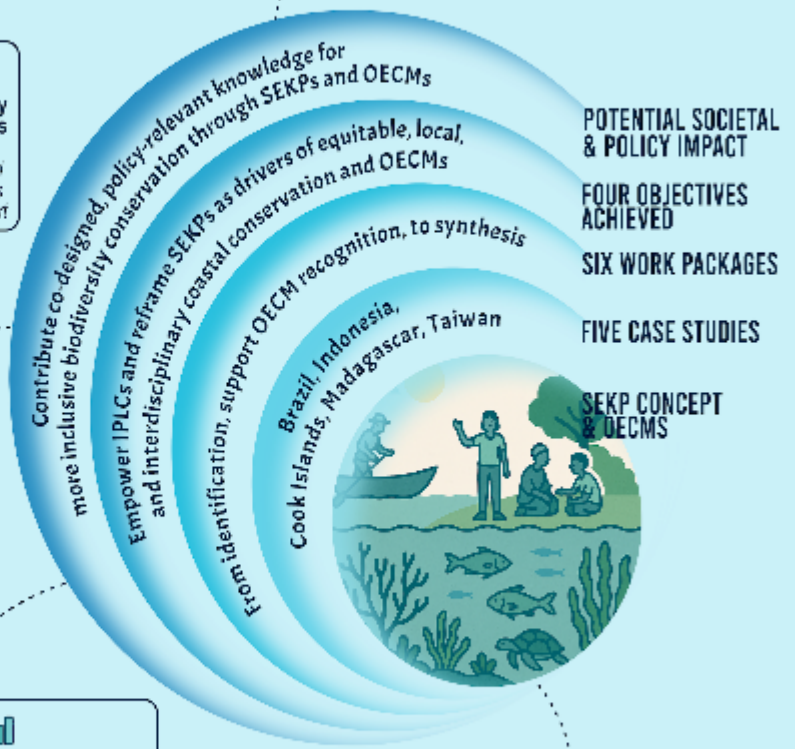


Taiwan


THE SKETCH FRAMEWORK RIPPLES OF KNOWLEDGE AND TRANSFORMATION

 From research questions to conclusions
Collaborative synthesis across sites, disciplines, and knowledge systems

 **Transdisciplinary co-researchers**
Local and indigenous partners lead co-research and shape the project's direction from the start



 **Participatory and mixed methods**
Combining qualitative + quantitative + hybrid tools

 **Co-defining and co-producing outputs**
Participatory knowledge creation aligned with community priorities



6 WP's

Case Study Sites & Consortium

| | | | | |
|---|---|---|--|---------|
| 1 | Brazil Great Amazon Reef System |  | UNIVERSIDADE FEDERAL DE PERNAMBUCO | |
| 2 | Madagascar Mananara-Antalaha Corridor |  | ZMT LEIBNIZ CENTRE for Tropical Marine Research | Germany |
| 3 | Indonesia Mempawah / West Kalimantan |  | IPB University Bogor Indonesia | Norway |
| 4 | Taiwan A'tolan (Dulan) |  | National Taiwan University | |
| 5 | Cook Islands Pukapuka Island |  | UBO Amure Université de Bretagne Occidentale CENTRE DE RECHERCHE ET D'ÉCONOMIE DE LA MER | France |
| | | | UNIVERSITÉ CÔTE D'AZUR | |



RECON: FOSTERING SYSTEMIC SOCIETAL TRANSFORMATION FOR BIODIVERSITY CONSERVATION THROUGH NATURE RECONNECTION

By *Katarzyna Rędzińska*

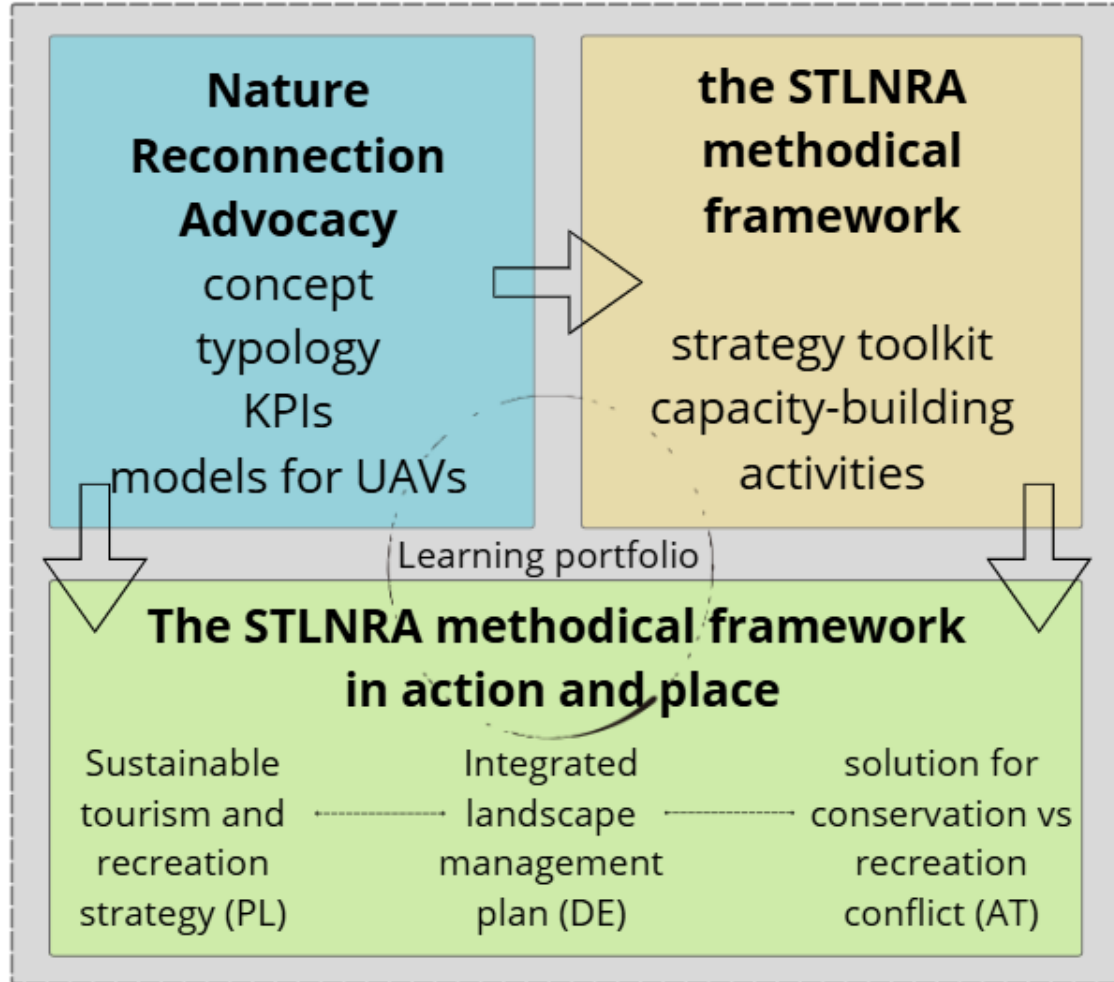
POLAND: *Department of Spatial Planning and Environmental Sciences, Faculty of Geodesy and Cartography, Warsaw University of Technology; Institute of Ethnology and Cultural Anthropology, University of Warsaw; Department of Geomatics, Forest Research Institute*

AUSTRIA: *Department of Landscape, Spatial and Infrastructure Sciences, Institute of Landscape Development, Recreation and Conservation Planning, University of Natural Resources and Life Sciences Vienna; Wegener Center for Climate and Global Change, University of Graz*

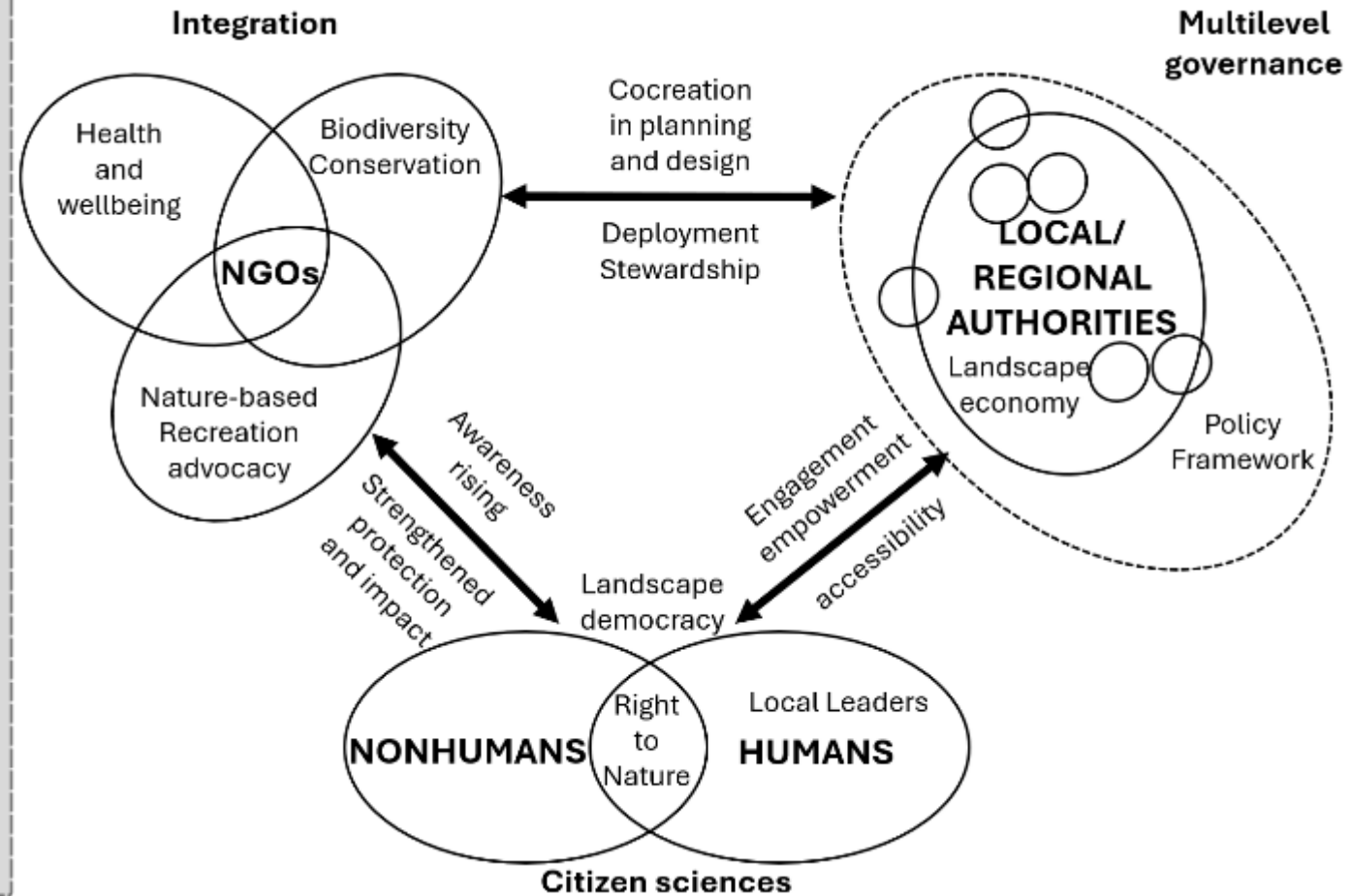
GERMANY: *Faculty Environment Design Therapy, Hochschule für Wirtschaft und Umwelt, Nürtingen, Germany; Stichting LE:NOTRE Institute, Wageningen, Netherlands*



RECON: FOSTERING SYSTEMIC SOCIETAL TRANSFORMATION FOR BIODIVERSITY CONSERVATION THROUGH NATURE RECONNECTION



Societal Transformation Laboratory for Nature Reconnection Advocacy (STLNRA)



Ecological Pilgrimage: Engaging with biodiversity through walking interventions

By Emily Höckert

University of Lapland & Natural Resources Institute Finland (Finland), the Swedish University of Agricultural Sciences & Umeå University (Sweden), the Norwegian Institute for Nature Research & National Pilgrimage Center (Norway), and the University of Iceland (Iceland)





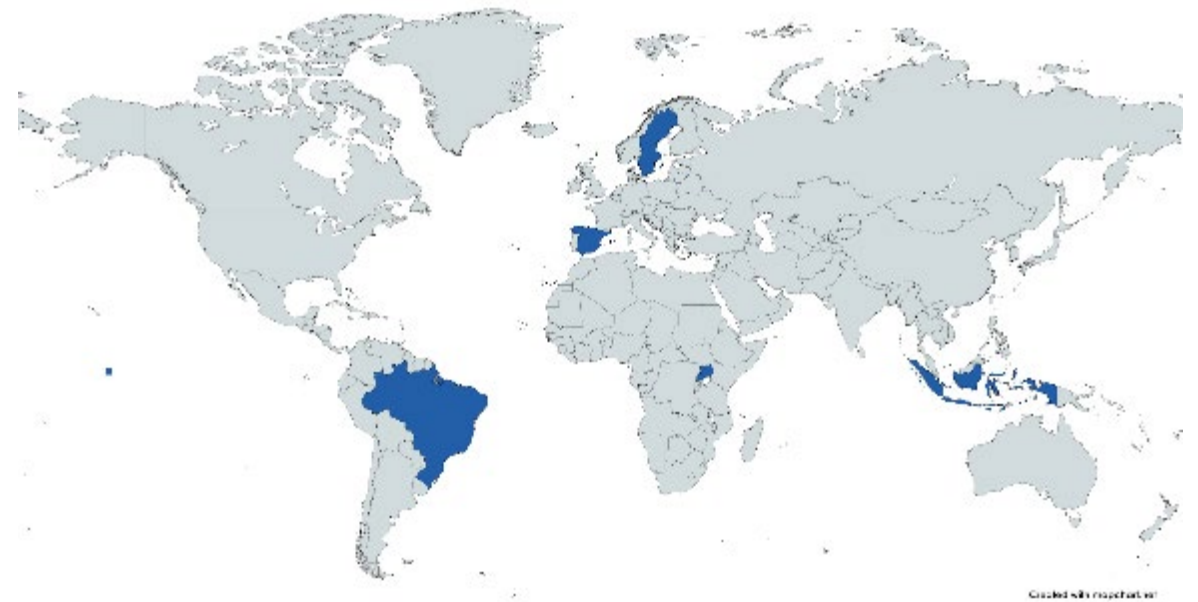
LEVER - Enhancing PLurivErsality for a Human Rights-Based Approach (HRBA): GoVERning the Climate-Biodiversity-Pollution Nexus

By Tilman Hertz

- Stockholm Resilience Centre (Sweden)
- Universidade de São Paulo (Brazil)
- Universitat Autònoma de Barcelona (Spain)
- Eurac Research (Italy)
- Vrije Universiteit Brussel (Belgium)
- Universität Bern (Switzerland)
- Makerere University (Uganda)
- Institut Pertanian Bogor (Indonesia)
- SwedBio at Stockholm Resilience Centre (Sweden)
- Soka Gakkai International, Office for UN Affairs (Switzerland)

LEVER - Enhancing PLurivErsality for a Human Rights-Based Approach (HRBA): GoVERning the Climate-Biodiversity-Pollution Nexus

- **HRBA** is a cross-cutting framework for the implementation of global conventions and agreements
- **Challenge:** Navigating a plurality of interests & values & property regimes
- **Objective:** Enhancing **effectiveness of HRBA** by developing & testing a legal glossary sensitive to pluriversality
- **How?** Transdisciplinary approach & five case studies



WildHarvest: Understanding and recognising *wild products harvesting* by Indigenous and Local communities to promote environmental justice and halt biodiversity erosion in Southern Africa

Presented by Dr Rhoda R. Malgas (Nelson Mandela University – South Africa)

Consortium:

Centre National de la Recherche Scientifique (CNRS France): *Prof Herve Fritz (Coordinator), Dr Chloé Guerbois*

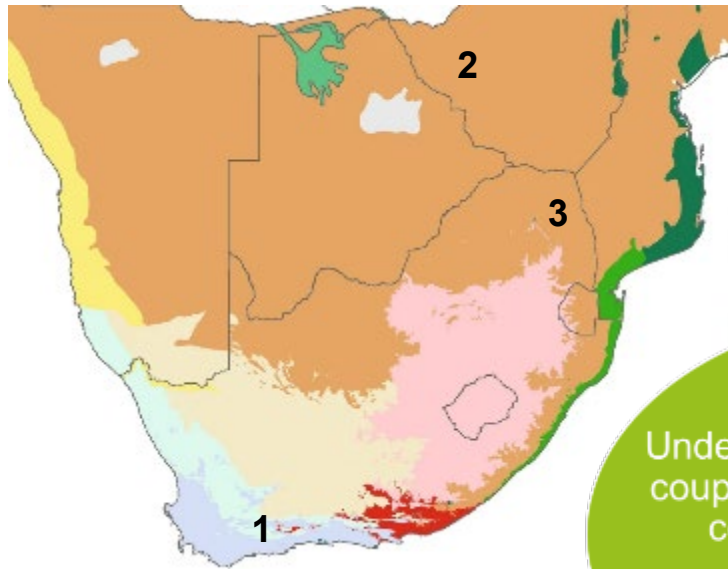
Sveriges Lantbruksuniversitet (LSU Sweden): *Dr Klara Fischer, Dr Vanessa Masterson, Prof Joris Cromsight*

Nelson Mandela University (NMU South Africa): *Dr Rhoda Malgas, Dr George Sekonya*

University of Limpopo (UL South Africa): *Dr Norman Matebula*



WildHarvest



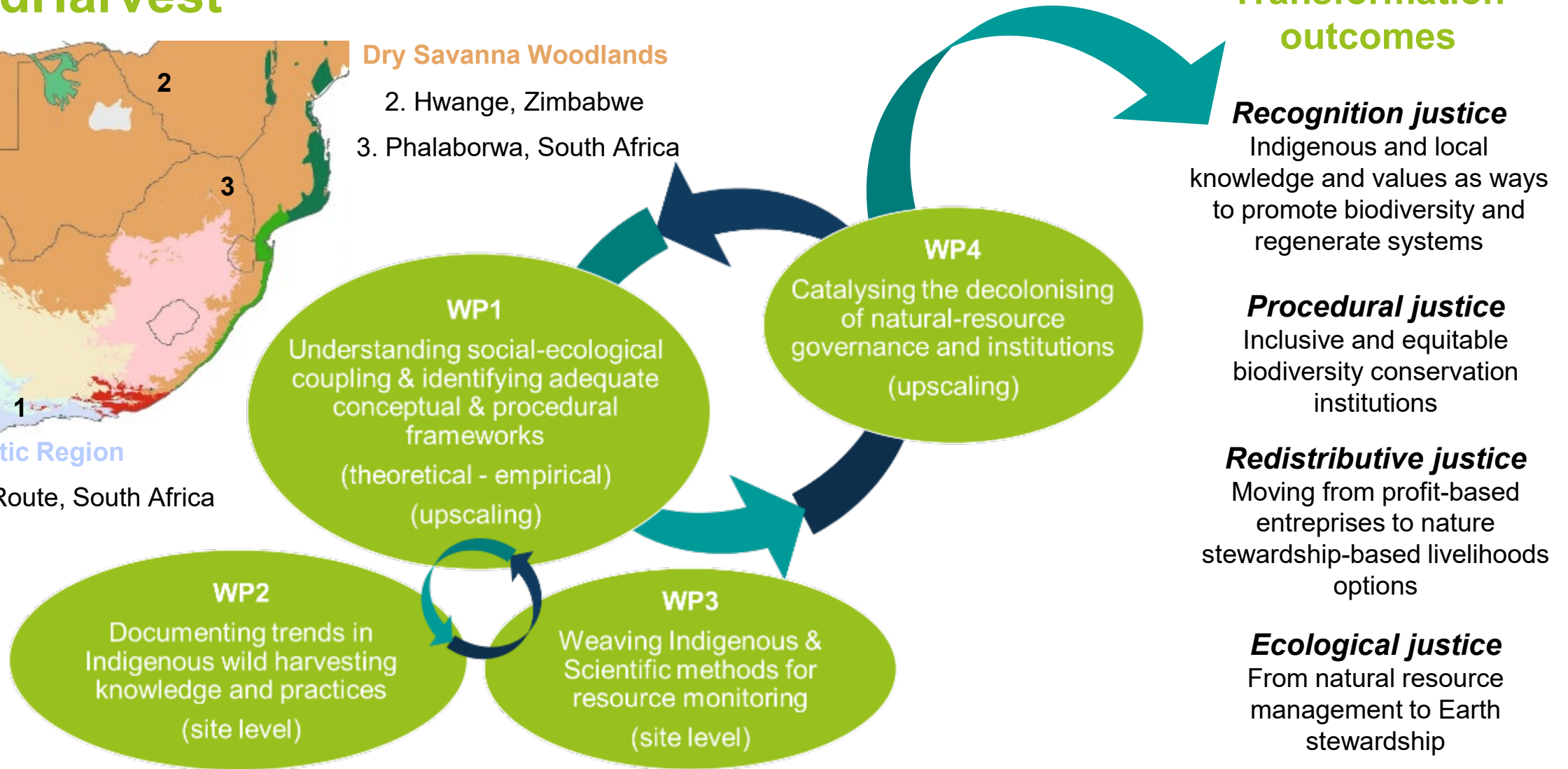
Dry Savanna Woodlands

2. Hwange, Zimbabwe

3. Phalaborwa, South Africa

Cape Floristic Region

1. Garden Route, South Africa



Transformation outcomes

Recognition justice

Indigenous and local knowledge and values as ways to promote biodiversity and regenerate systems

Procedural justice

Inclusive and equitable biodiversity conservation institutions

Redistributive justice

Moving from profit-based enterprises to nature stewardship-based livelihoods options

Ecological justice

From natural resource management to Earth stewardship

ProEcoRice – A transformative production system for making rice paddies biodiverse and climate neutral

By **Gurbir Singh BHULLAR**, BFH-HAFL, Switzerland

Partners:

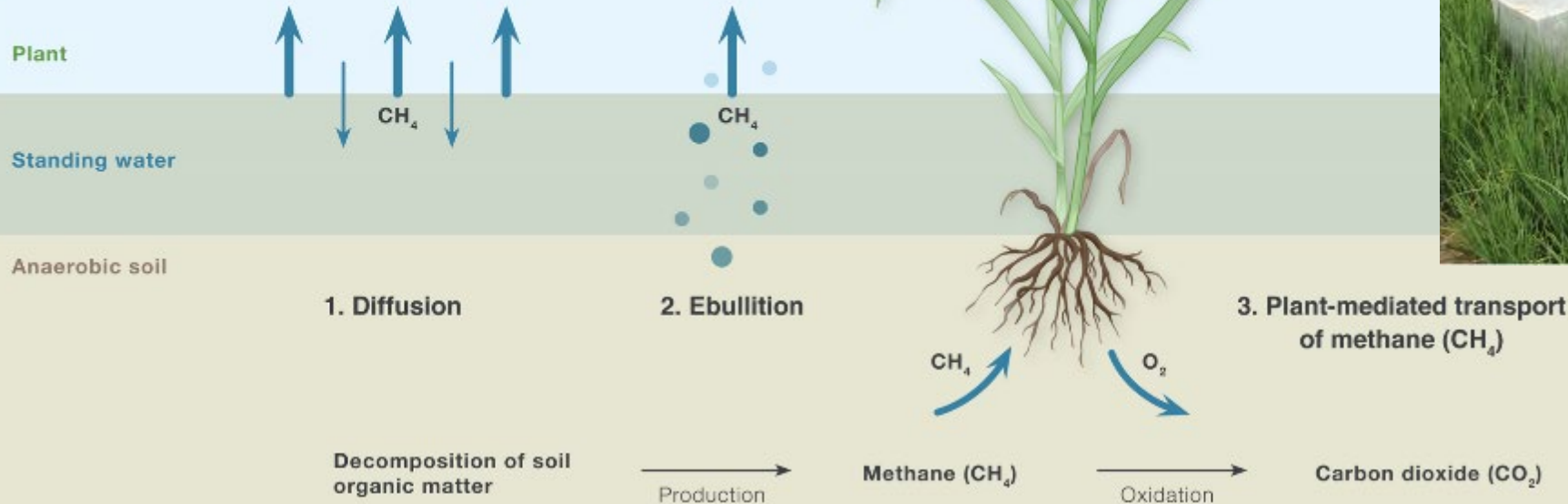
-  Marianna Fenzi, Lausanne University (UniL), **Switzerland**
-  Harry Olde Venterink, Vrije Universiteit Brussel (VUB), Brussels, **Belgium**
-  Laura Prospero, University of Milano-Bicocca; Alesandro Banterle, Università degli Studi di Milano; Giuseppe deSantis et al., Rete Semi Rurali ETS, Scandicci, **Italy**
-  Shuen-Fang and Dong-Hong Wu, National Chung Hsing University (NCHU), Taichung, **Taiwan**
-  Mathimaran Natarajan, Pondicherry University, Puducherry, **India**

Can we reduce GHG emissions while enhancing biodiversity in rice fields, and stay socio-economically viable?

Production: Methane is naturally produced in submerged soils under anaerobic conditions.

Transport: Methane is transported to the atmosphere via three major pathways.

Oxidation: In the rhizosphere methane can be oxidized to carbon dioxide.



Few words by the Biodiversa+ Follow-up Team

Ondřej Kusbach and Matěj Štěpánek, TA CR

Key Reminders

A fountain of knowledge: Ondřej + Matěj + Dropbox (Toolkit)

- **Events** (including presentations)
- **Logos** (Funding Organisations) + **acknowledgement**
- **Follow-up Guidelines + Templates**

Changes in your project (Follow-up Guidelines / BiodivTransform Info-Session)

- **Major:** budgetary, consortium, etc. => *inform us (change request procedure)*
- **Minor:** content-related, cost-categories reshuffles => *no need to inform us*

Serious difficulties

- **Let us know** => ready to assist/support you

(current) Burning Issues

- 1) ***One of our partners has not received the funding yet. Is the project over?***
 - **NO! :) This is a common situation (no need to worry).**
 - Various national rules result in different national timelines for formal steps (contract/funding)
 - Note: Your FO may enable you to claim eligible expenses incurred retroactively from the project's start date

- 1) ***One of the partners was asked to submit a CA. What should this document contain and look like?***
 - CA typically addresses IPR, rules and rights among the partners (governance), etc.
 - We usually recommend DESCAs model (template), however, check with the FOs

Concluding words and AOB

Magnus Tannerfeldt, Biodiversa+ Co-Chair, Formas, Sweden

#BiodivTransform

**Posting about the
BiodivTransform
Kick-off on social media?**

**Don't forget to tag
[@BiodiversaPlus](#)**



To engage with a constantly evolving science-policy interface, you are welcome to get in touch at networks@bioagora.eu, and check their website where calls for experts and knowledge contributions are regularly published



<https://bioagora.eu>



**Transforming
processes
within and between
Science and Policy**



**Creating and
supporting
active thematic
networks**



**Answering
requests and
build-up evidence
base**



biodiversa+
European Biodiversity Partnership

**Thank you and all the best to
the BiodivTransform funded
projects!**



www.biodiversa.eu



contact@biodiversa.eu



Biodiversa+



**Co-funded by
the European Union**

Funded by the European Union. Views and opinions expressed are however those of the author(s) only and do not necessarily reflect those of the European Union or the granting authority. Neither the European Union nor the granting authority can be held responsible for them.

