



biodiversa+
European Biodiversity Partnership

External review of IPBES Monitoring Assessment

Monday 24th November 2025 – 1pm CET



13:00 – 13:05 – **Welcome words**

Rob J.J. Hendriks - Science-policy officer at the Dutch Ministry of Agriculture, Fisheries, Food security and Nature, IPBES capacity building task force and co-lead of Biodiversa+ work package on Internationalization

13:05 – 13:15 **Introduction to IPBES and IPBES assessments**

Marie-Claire Danner - Science officer in European Affairs at the French Foundation for Biodiversity Research, former technical support unit for the Sustainable Use of Wild Species Assessment

13:15 – 13:30 **Presentation of the Monitoring Assessment and where input is most needed from reviewers**

Petteri Vihervaara – Research Professor at Syke, Coordinating lead author in the Monitoring Assessment and lead of Biodiversa+ work package on Monitoring

13:30 – 13:40 **How to register as a reviewer and write comments that have more chance to be taken into account**

Marie-Claire Danner

13:40 – 14:00 **Q&A session**

Introduction

Rob J.J. Hendriks

Science-policy officer at the Dutch Ministry of Agriculture, Fisheries, Food security and Nature,
IPBES capacity building task force and co-lead of Biodiversa+ work package on
Internationalization

Biodiversa+

Biodiversa+, the **European Biodiversity Partnership**, is committed to the [Global 2050 Vision](#) of “Living in harmony with nature” adopted under the Convention on Biological Diversity, and the corresponding EU’s vision that by 2050, biodiversity and its benefits to people will be protected, valued and restored.

It currently gathers 83 research programmers and funders and environmental policy actors from 41 European and associated countries to work on 5 main objectives:

1. Plan and support research and innovation on biodiversity through a shared strategy, **annual joint calls for research projects** and capacity-building activities
2. Set up a network of **harmonised schemes to improve monitoring of biodiversity and ecosystem services** across Europe
3. Contribute to high-end knowledge for deploying **Nature-based Solutions** and valuation of biodiversity in the private sector
4. Ensure efficient **science-based support for policy-making** and implementation in Europe
5. Strengthen the relevance and impact of pan-European research on biodiversity in a **global context**.

Biodiversa+ and IPBES

01

Assessing knowledge

Biodiversa+ develops factsheets to feed IPBES assessments during the review process, based on peer-reviewed publications from Biodiversa+ projects.

02

Building capacity

Biodiversa+ organises events to support the engagement of European experts in IPBES processes. This supports Biodiversa+ researchers in their career development and is an opportunity for the results from Biodiversa+ funded projects to be showcased and cited in IPBES assessments.

03

Strengthening the knowledge foundations

Biodiversa+ supports knowledge generation to address knowledge gaps identified by IPBES and provides recommendations to improve the monitoring and uptake of IPBES knowledge gaps. It was also selected to host the IPBES Technical Support Unit (TSU) for “Knowledge Generation Catalysis” in 2019 and in 2024.

04

Supporting policy

Biodiversa+ is engaged in a key collaboration with other EU-projects, including RESPIN to support the provision and use of processes and outputs of IPBES and IPCC.

Introduction to IPBES and IPBES assessments

Marie-Claire Danner

Science officer in European Affairs at the French Foundation for Biodiversity Research,
former technical support unit for the Sustainable Use of Wild Species Assessment



Intergovernmental Science-Policy Platform on Biodiversity and Ecosystem Services

- Established in 2012 by 94 governments and hosted by UNEP (United Nations Environment Programme)
- 152 governments as members and + 600 organisations as observers (CITES, TRAFFIC, IPCC, Universities, Environmental associations, Environmental centers, etc.)

Main goal: To strengthen knowledge foundations **for better policy through science**, for the conservation and sustainable use of biodiversity, long-term human well-being and sustainable development



Assess the state of knowledge on biodiversity and nature's contributions to people in support of sustainable development



Build capacities of individuals and institutions



Promote the generation of knowledge and management of data on biodiversity as a foundation for the work of IPBES



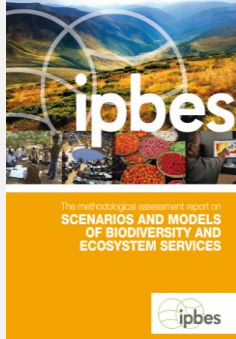
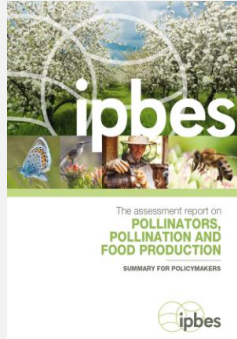
Identify and promote the development and use of policy instruments, policy support tools and methodologies



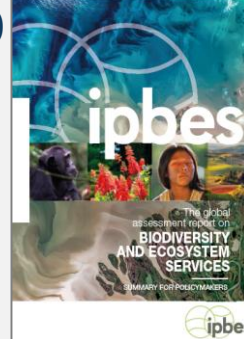
Strengthen the involvement of members and stakeholders, and increase the visibility of IPBES and the use of IPBES products

13 completed IPBES assessments

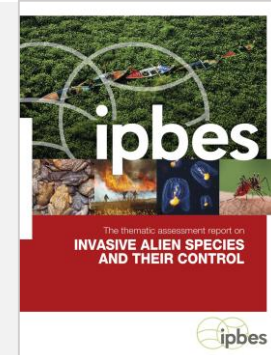
2016



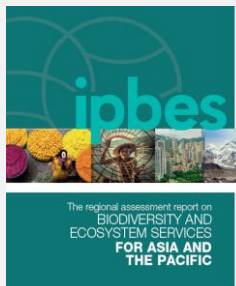
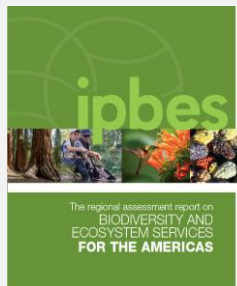
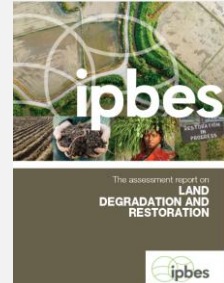
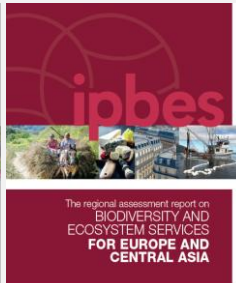
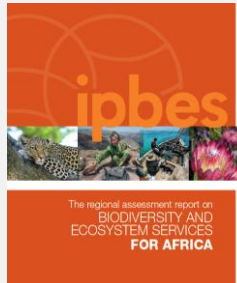
2019



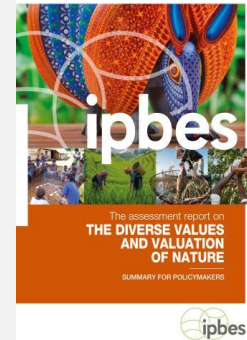
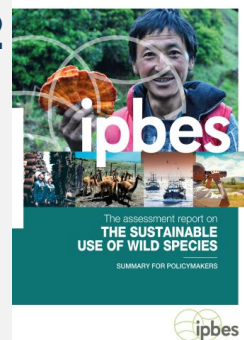
2023



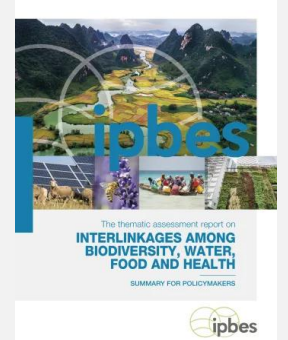
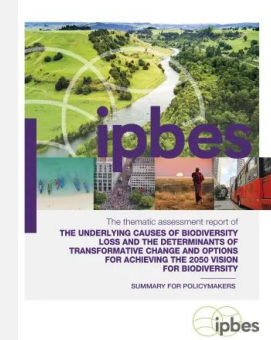
2018



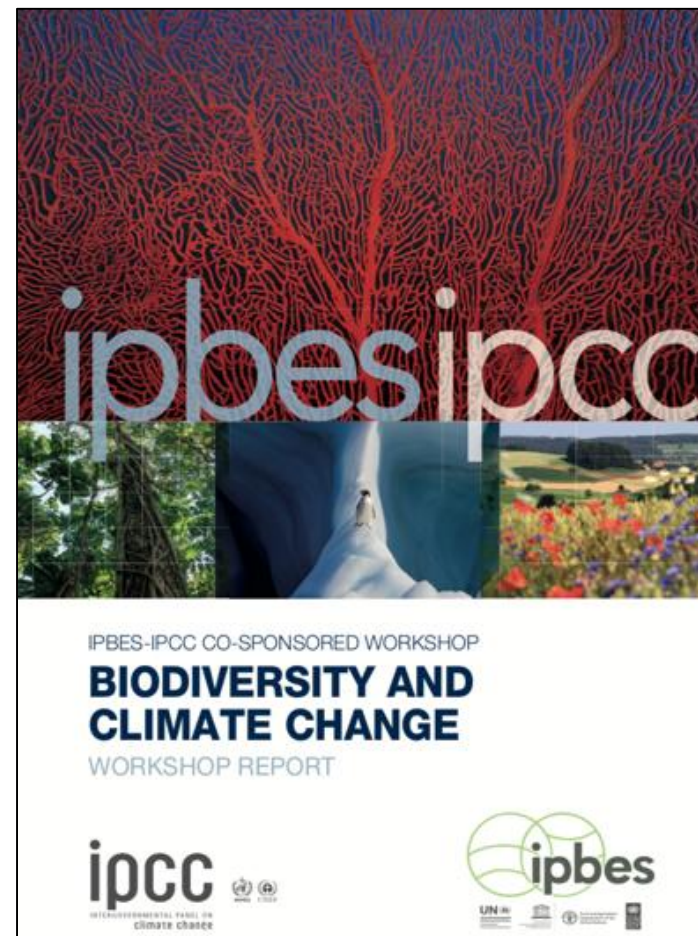
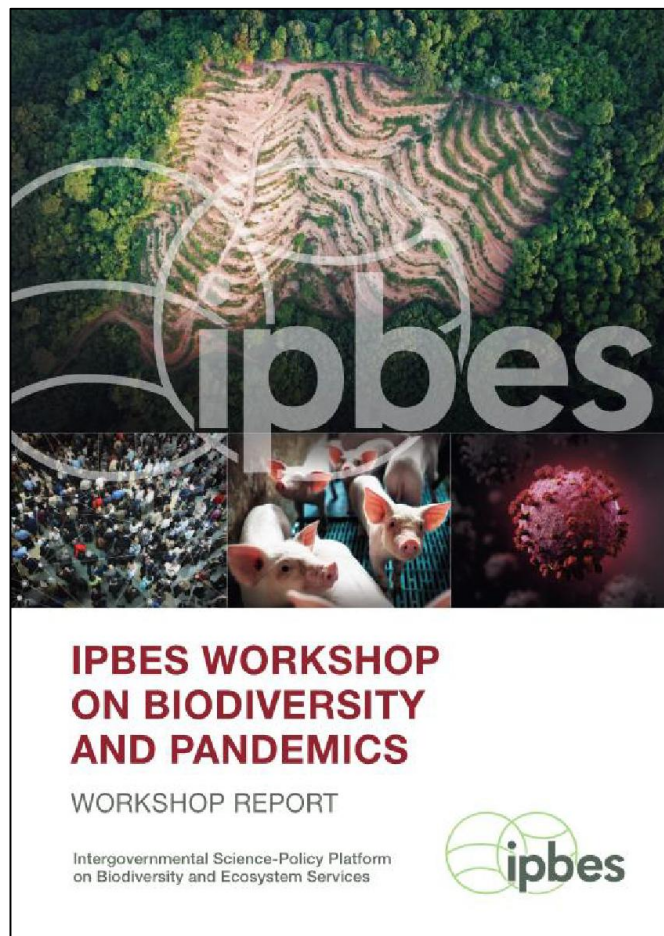
2022



2024



And two workshop reports



What is an IPBES assessment report?

5/6 chapters and
a glossary

Summary for
policymakers
(SPM)

Around 50 to 150
experts with
different expertise
from all countries

Between 3 and 4
years

External reviews
open to all

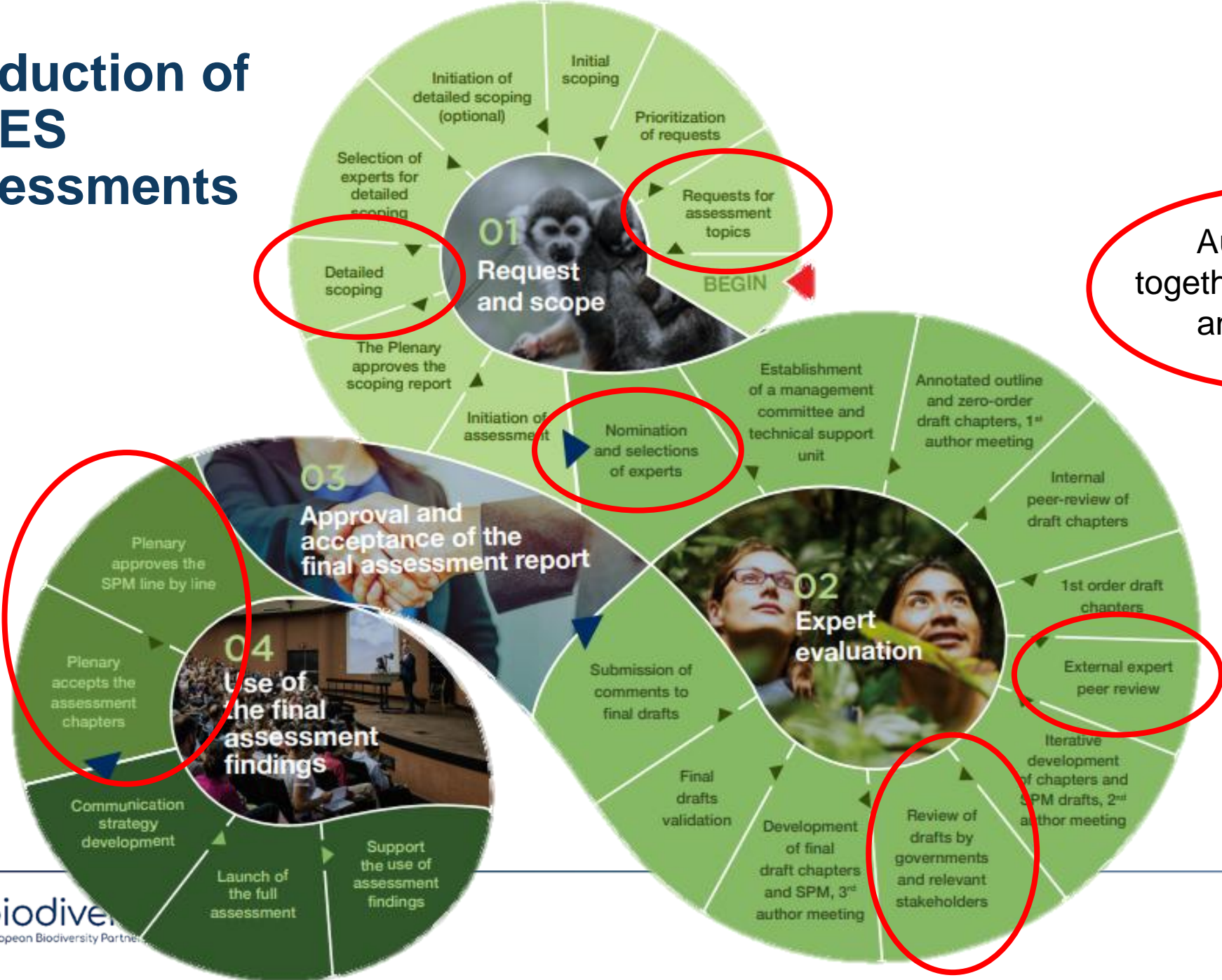
Approval by
IPBES member
states

IPBES does not produce new knowledge; it **synthesizes existing knowledge** and produces recommendations.

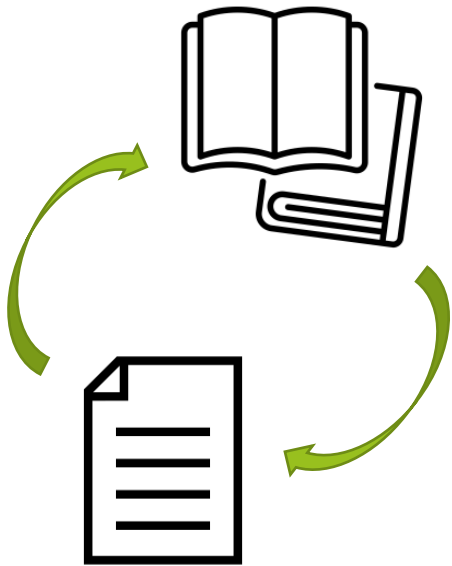
The **chapters** are written by the authors of the assessment and contain a summary of existing, well-established and widely shared knowledge, but also more uncertain knowledge, and knowledge gaps.

The **SPM** is a document, negotiated by countries during IPBES plenary sessions, which summarizes the key messages from the chapters of the assessment. The elements of the summary for policymakers are therefore taken from the elements present in the chapters.

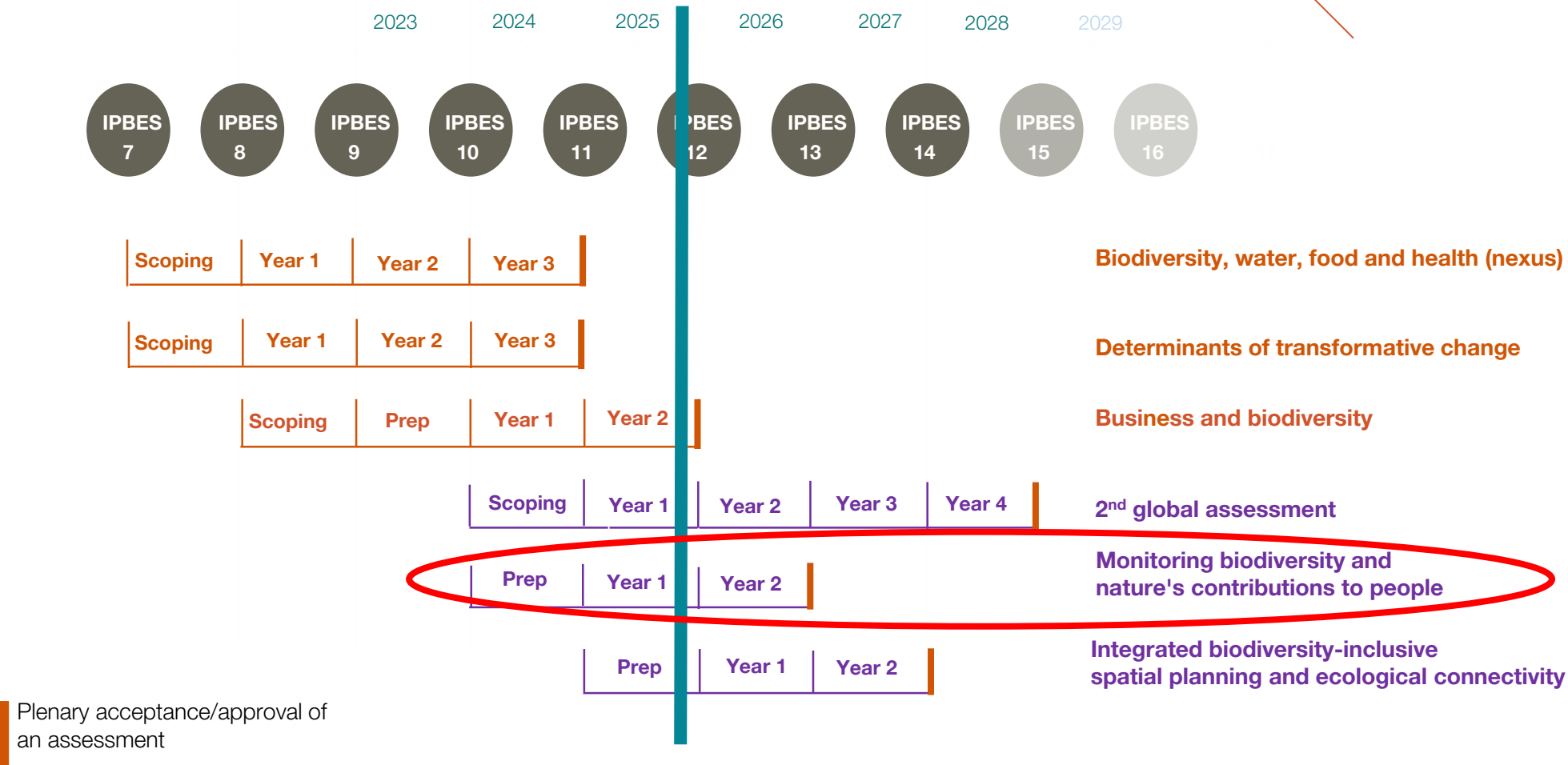
Production of IPBES assessments



Authors write together the chapters and the SPM



Indicative assessment timeline up to 2030



Revised timeline



What is a reviewer?



Expert reviewers participate in the review process by evaluating **chapters and/or SPM** drafts for **scientific accuracy, balance, and completeness**.

You may review individual sections, full chapters, or entire drafts during formal review periods.

Anyone with relevant expertise can register.

All reviewers are acknowledged publicly with their names, affiliations and country in an annex to the published reports. All comments and their responses are made available after publication.

Why should you review an IPBES assessment?



Ensuring scientific rigour and balance - The task is to critique and improve the draft's accuracy, comprehensiveness, and objectivity. This helps guarantee that the final assessment is scientifically robust, unbiased, and credible.



Increasing transparency and trust - Opening drafts to expert and governmental reviews enhances transparency.



Capturing diverse perspectives and knowledge - Broad participation in the review process, including scientists, practitioners, policymakers, and representatives of Indigenous peoples and local communities, helps ensure that a diversity of perspectives and relevant literature is considered.



Identifying and closing knowledge gaps - Reviewers can highlight areas where important evidence or viewpoints may be missing, as well as point out inconsistencies or uncertainties that require clarification. They can also indicate imbalances and bias in the presentation of knowledge that the authors might not be aware of.

Presentation of the Monitoring Assessment and where input is most needed from reviewers

Petteri Vihervaara

Research Professor at Syke, Coordinating lead author in the Monitoring Assessment and lead of Biodiversa+ work package on Monitoring



IPBES Monitoring Assessment (MTA) - ongoing

Petteri Vihervaara, Syke
Research Professor (*Biodiversity monitoring for sustainability*)
IPBES MTA, CLA, Chapter 3



Suomen ympäristökeskus
Finlands miljöcentral
Finnish Environment Institute

IPBES Monitoring assessment

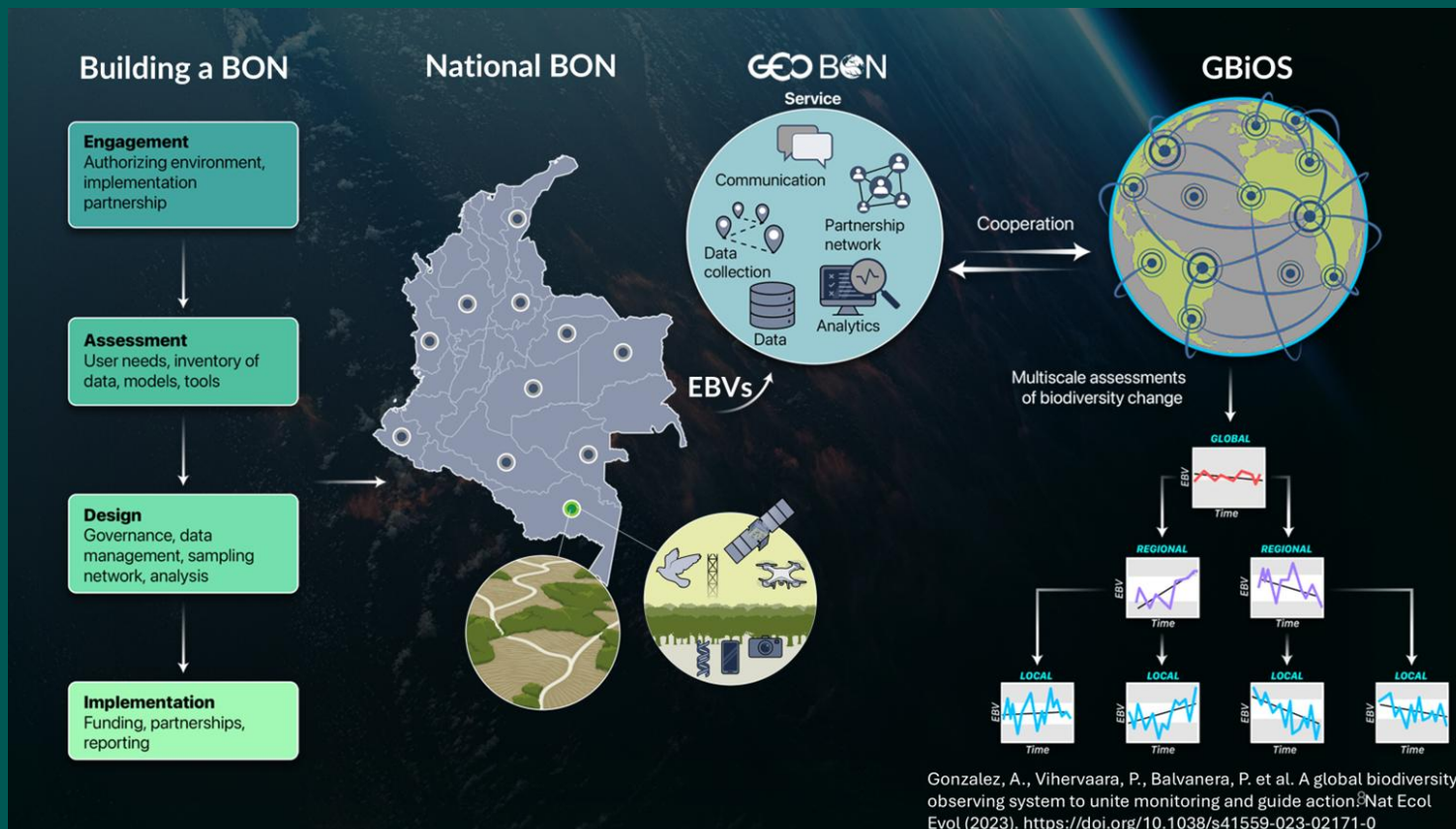
Scope and rationale

The objective of the methodological assessment on monitoring biodiversity and nature's contributions to people is **to support national and global efforts to**

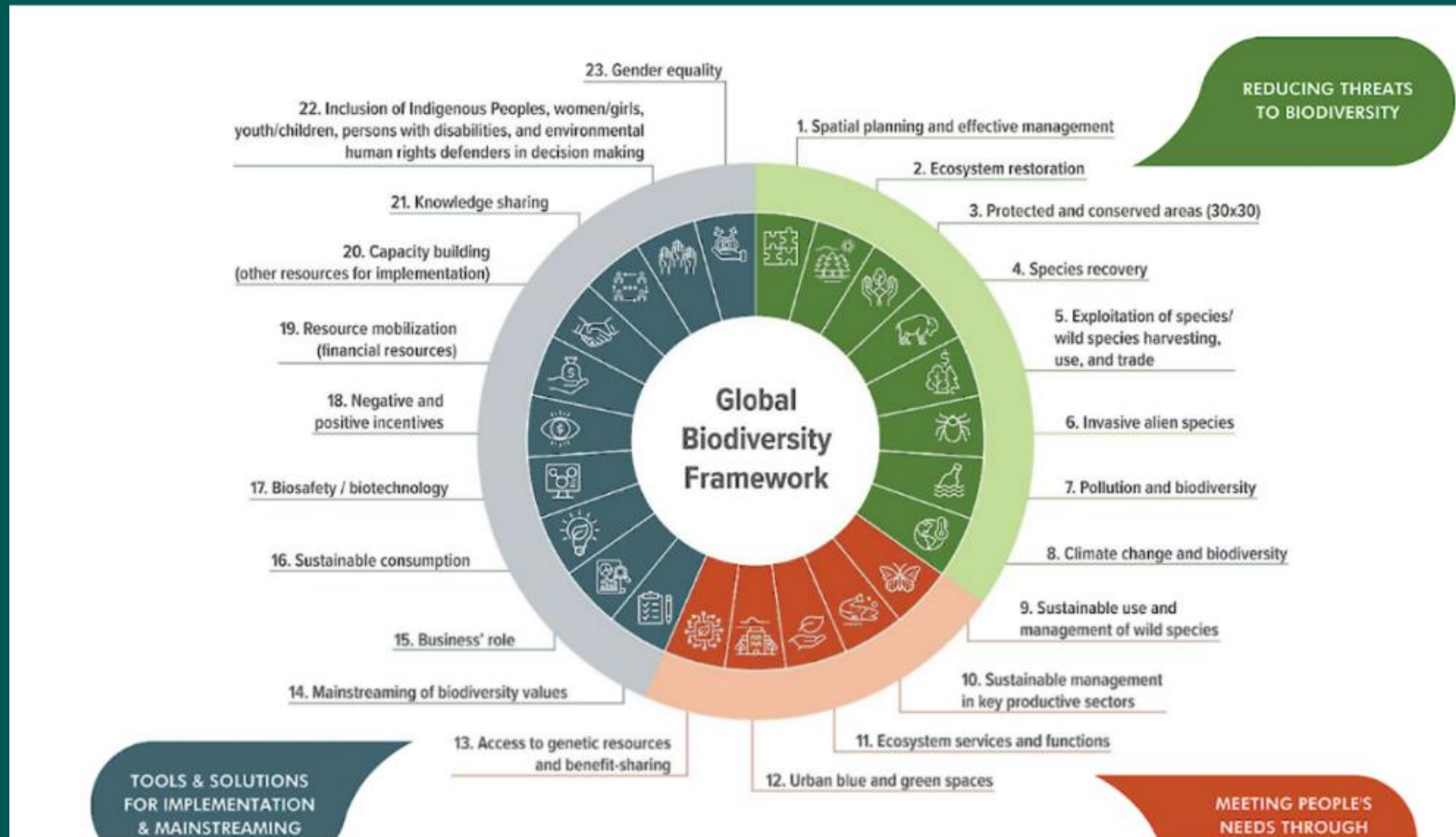
- (a) monitor biodiversity, nature's contributions to people and the direct and underlying causes of the observed changes; and**
- (b) monitor progress towards the goals and targets of the Kunming-Montreal Global Biodiversity Framework in support of a balanced and enhanced implementation of the Convention on Biological Diversity**

IPBES MTA – background

- Increasing awareness on the lack of data (on the state of biodiversity & NCPs) to report, for instance, CBD
- GEO BON, GBIF, OBIS etc. have suggested a need for GBiOS – Global Biodiversity Observing System



Main driving policy-need for IPBES MTA: Kunming-Montreal Global Biodiversity Framework



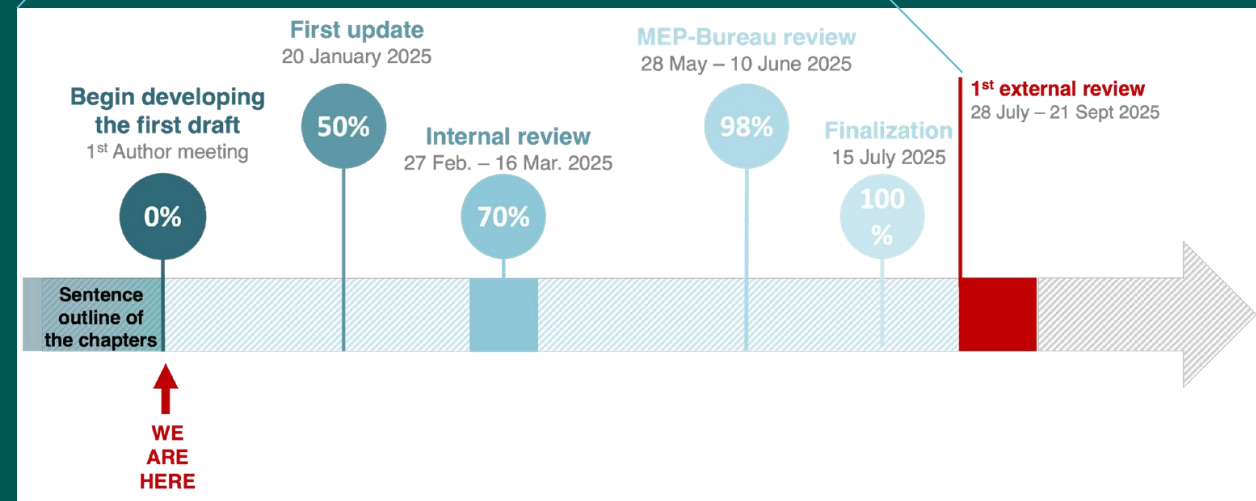
IPBES Monitoring assessment

- Fast track (2 years)
 - Kick-off & 1st authors meeting Nov 2024, Montreal, Canada
 - SPM April 2025, Hongkong
 - External revision of draft chapters and draft SPM, Nov 2025 – Jan 2026
 - 2nd authors meeting Feb 2026, Frascati, Italy, update chapters
 - Final revision by governments and stakeholders, early 2027
 - Acceptance in the IPBES 13th Plenary late 2027

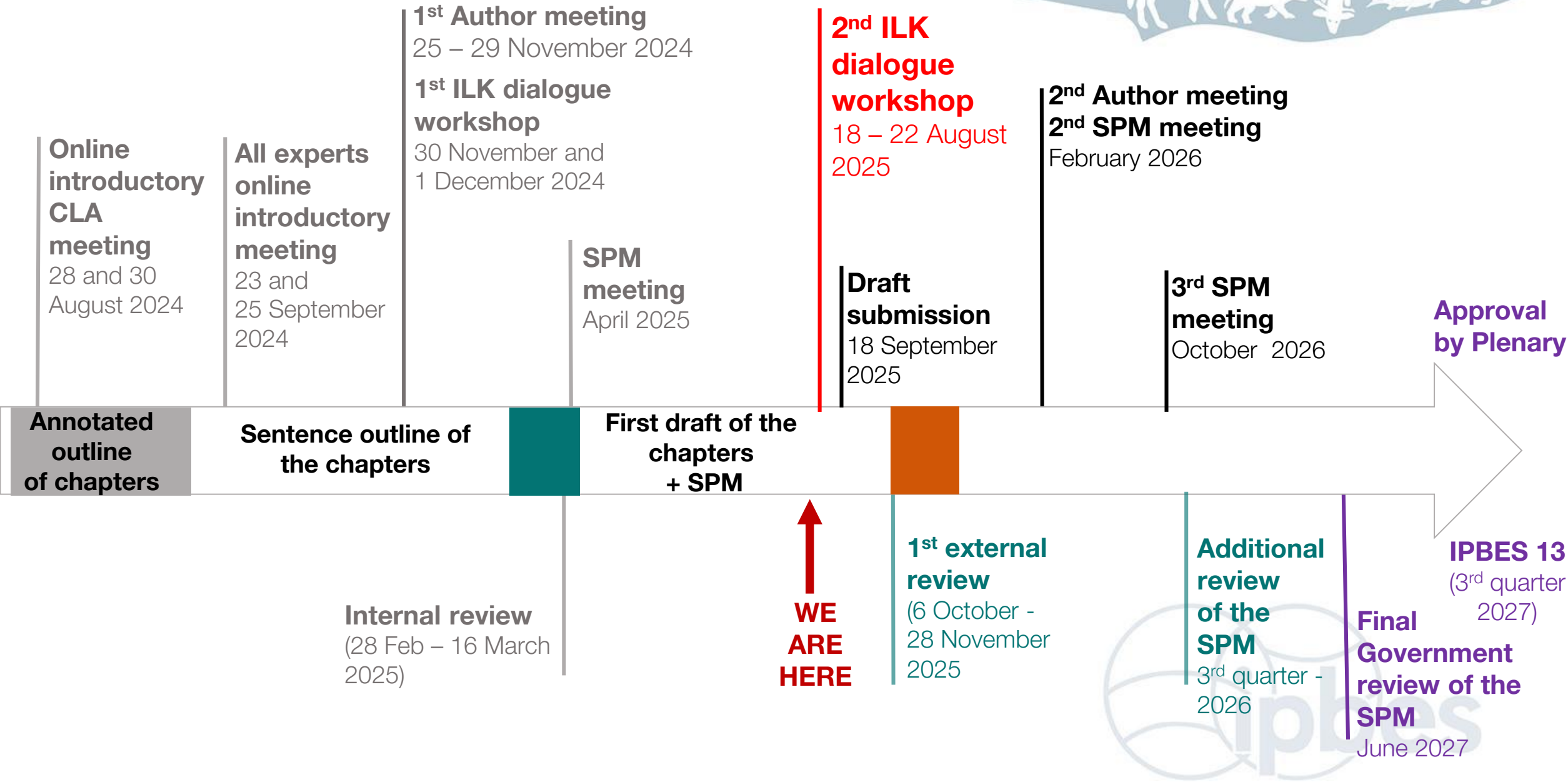
Extremely aggressive timeline! (preliminary)



<https://www.ipbes.net/monitoring-assessment>



Revised timeline



Chapters & Roles

- 4 chapters (negotiated by the Plenary):
 - Chapter 1: Setting the scene (i.e., *concepts & history*)
 - Chapter 2: Assessing the data needs (i.e., *global, regional, national, local/IP/LC*)
 - Chapter 3: Assessing the challenges in biodiversity monitoring to meet needs (i.e., *what data do we have, gaps, challenges, and what systems do we have to deliver data to users*)
 - Chapter 4: Options for strengthening the capacity to monitor biodiversity worldwide (i.e., *way forward*)
 - *MTA's 3 co-chairs* (with areas of responsibility: general/terrestrial, marine, ILK)
 - Each chapter has 3 coordinating lead authors (CLA)
 - Each chapter has 11-15 lead authors (LA) + 2 review editors + 2 fellows
 - Option to invite contributing authors to fill thematic gaps (no authorship, just acknowledgements)
- Approximately 20 % of working time is expected to be used as a CLA, and 10-15 % as a LA



Where to pay attention during the revision

- Mirror with the scoping document
 - Overlaps between chapters
 - Missing data or monitoring systems
 - Missing literature
 - Glossary
 - Information going for Annexes
-
- Figures and tables are in progress
 - SPM will evolve after the revision

"No new data collection or analysis is possible in the assessment; everything needs to be based on already published evidence."

"Role of AI was expected to be more promising as it was in the end."

"Geographical gaps occur, such as Africa, Central Asia."

"Global and regional scale schemes are pretty well covered, but access to local/national scale data and systems has been tricky."

Thanks!



1st author meeting in Montreal Nov 2024



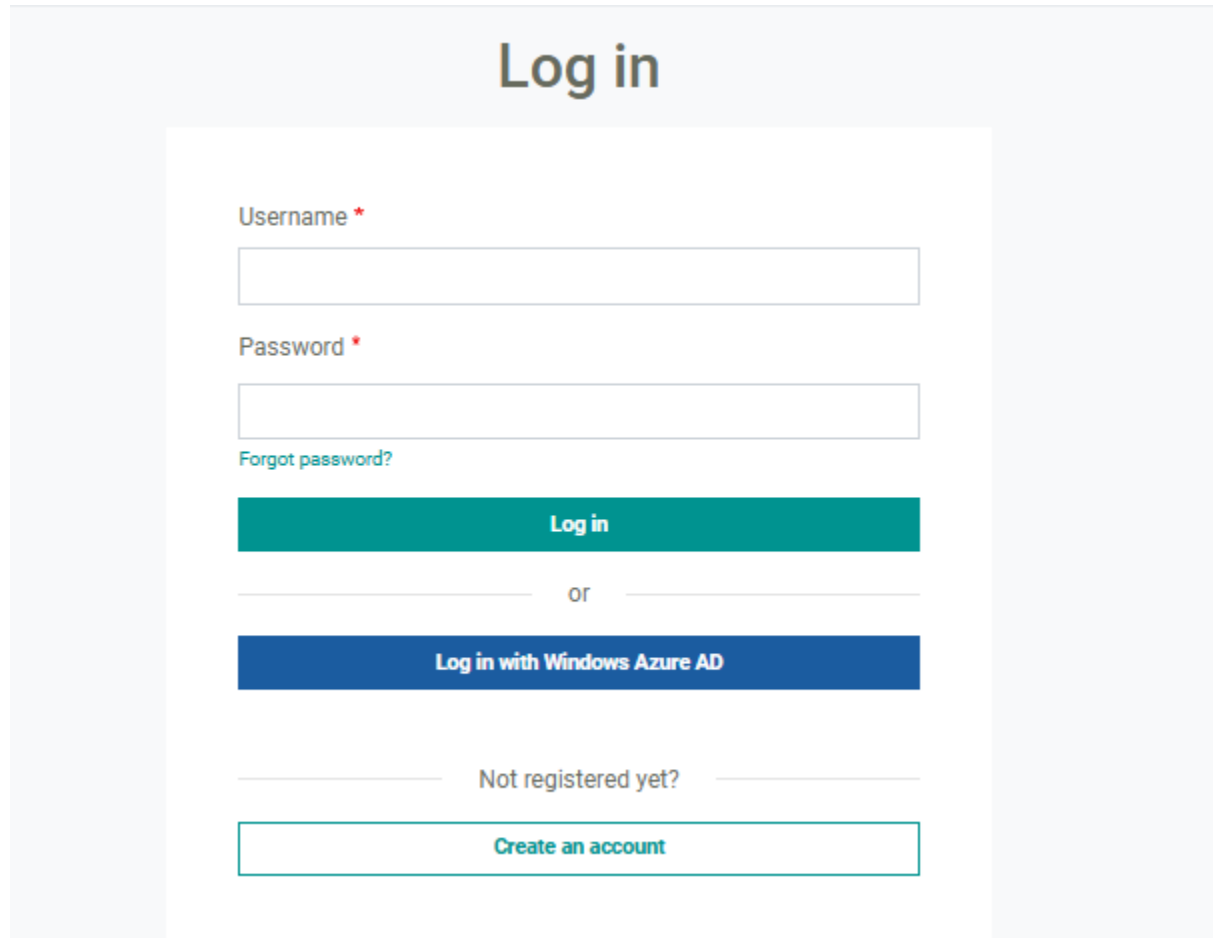
Suomen ympäristökeskus
Finlands miljöcentral
Finnish Environment Institute

How to register as a reviewer and write comments that have more chance to be taken into account

Marie-Claire Danner

Science officer in European Affairs at the French Foundation for Biodiversity Research,
former technical support unit for the Sustainable Use of Wild Species Assessment

How to register as a reviewer



The image shows a web form for logging in or creating an account. At the top, the text "Log in" is centered. Below it, there are two input fields: "Username *" and "Password *". A link "Forgot password?" is positioned below the password field. A teal button labeled "Log in" is below the fields. A horizontal line with the word "or" in the center separates this from a blue button labeled "Log in with Windows Azure AD". Another horizontal line with the text "Not registered yet?" in the center is below that. At the bottom is a teal button labeled "Create an account".

Step 1

Create an account on IPBES website if you do not have one already.

You can only register to become a reviewer if you are **LOGGED IN**.

Step 2

Go to the review page <https://www.ipbes.net/monitoring-assessment/external-review/registration> - (you can only see it if you are logged in) and fill the registration form

View

Edit

Results

Revisions

← / Monitoring assessment / External review of the IPBES Monitoring Assessment

Reviewer registration for the external review of the IPBES monitoring assessment

The review will take place from **November 5, 2025**, to **January 7, 2026**.

Scroll down to view the form. You need to be **logged in** to view and submit the form.

For any technical difficulties, please contact us at mea-ipbes@un.org.

Personal information

First Name *

Marie-Claire

Last name *

Danner

Email *

marie-claire.danner@fondationbiodiversite.fr

Nationality(ies) *

× France

You can only select a maximum of 2 nationalities

Reviewer category *

External review of the IPBES Monitoring Assessment

Dear Reviewer,

Thank you for your registration and willingness to review the summary for policymakers (SPM) and the chapters of the IPBES methodological assessment on monitoring biodiversity and nature's contributions to people (monitoring assessment).

Guidelines for the additional review

Review comments should be provided in English and focus on key substantive issues. Comments should be provided in a constructive fashion, with, if possible, a suggestion for improvements. If providing suggestions for text revisions, please provide full citations for relevant literature. Please also provide full citations if suggesting additional references. Text style, grammar and spelling will be corrected for the final version of the assessment and do not need comments at this stage of review. Formatting will also be corrected and harmonised a for the final version. Graphics editors will be used to format the final versions of tables and figures.

Instructions and guidelines for the additional review

It is mandatory to use the **review comments template** worksheet ("1. Comments" tab) in the Excel file provided below to submit comments. Please see the second worksheet ("2. Examples" tab) in the Excel file for examples of how to input comments. **Please do not modify any worksheet structure, formatting, formulas, or locked content.** Review comments will not be accepted unless properly entered in the Excel sheet provided. The additional review will take place from **November 5, 2025, to January 7, 2026**. All worksheets must be submitted by uploading using the '**Add Review**' button on this page.

*Please note that the draft documents are confidential. **One of the conditions of being a reviewer, to which you agreed upon registration, is that the drafts cannot be cited, quoted or circulated.** Please note the drafts are for your use only. If you have colleagues or know of others who would like to review the draft documents, please encourage them to register on the website but do not forward your draft document file(s) to them. Furthermore, as these are confidential drafts we ask you to please refrain from uploading the files into Artificial Intelligence/Natural Language Processing tools.*

Important note: You must be registered as a reviewer and **logged in** to view the draft documents at the bottom of this page. Register [here](#) if you haven't already completed your registration.

If you have any questions, please contact the monitoring assessment technical support unit at monitoring-assessment@ipbes-tsu.org.

We thank you again for your continued support of IPBES.

[Add Review](#)

Title	Document	Deliverable	
MTA: First draft of Chapter 1	MTA_FOD_CH1.pdf	Monitoring assessment	edit
MTA: First draft of Chapter 2	MTA_FOD_CH2.pdf	Monitoring assessment	edit
MTA: First draft of Chapter 3	MTA_FOD_CH3.pdf	Monitoring assessment	edit

Step 3

Access all documents. They are **CONFIDENTIALS** and should not be shared with any third parties.

Download the documents and the spreadsheet to leave comments.

Step 4

Review the documents relevant to your expertise using the excel table provided.

Do not modify the structure of the table.

TIP: use 2 screens – one with the chapter/SPM and one with the excel table

review_comments_template_MTA_fod_v1 (1) - Excel

Fichier Accueil Insertion Mise en page Formules Données Révision Affichage Acrobat Outils de tableau Création

Coller Presse-papiers Police Alignement Renvoyer à la ligne automatiquement Fusionner et centrer Standard Mise en forme conditionnelle Mettre sous forme de tableau Styles de cellules Insérer Supprimer Format Somme automatique Remplissage Effacer Trier et Rechercher et filtrer sélectionner Créer un PDF et le partager le lien partager via Outlook Adobe Acrobat

H14

	A	B	C	D	E	F	G	H
5	Instructions	Do not modify any worksheet structure, formatting, formulas, or locked content.						
6		All comments should be in English.						
7		Please select the document you are reviewing in column A for each row even if multiple rows contain comments for the same document.						
8		For general comments, record page and line numbers as 0; that is, page 0, line 0. Rows missing information about document, page numbers, line numbers and/or comment will be orange-coloured as an indication that this information is missing. Please enter the missing information and enter "0" for documents that have no line numbers.						
9		In column H, you may enter the name of the person submitting the comment if there are multiple people submitting comments in one/the same comment template.						
10		If you encounter any technical issues uploading your comments template, please contact mea-ipbes@un.org						
11	Example comments	Click the "2. Example" tab at the bottom of the worksheet for an example of how to enter comments correctly.						
12	document reviewed (required for rows containing comments)	from page (start)	from line (start)	to page (end)	to line (end)	comment	type	reviewer
13								
14								
15								
16								
17								
18								
19								
20								
21								
22								
23								
24								
25								
26								
27								
28								
29								
30								
31								
32								

1. Comments 2. Example 3. Options

Prêt

Step 5

Submit the excel table

External review of the IPBES Monitoring Assessment

Dear Reviewer,

Thank you for your registration and willingness to review the summary for policymakers (SPM) and the chapters of the IPBES methodological assessment on monitoring biodiversity and nature's contributions to people (monitoring assessment).

Guidelines for the additional review

Review comments should be provided in English and focus on key substantive issues. Comments should be provided in a constructive fashion, with, if possible, a suggestion for improvements. If providing suggestions for text revisions, please provide full citations for relevant literature. Please also provide full citations if suggesting additional references. Text style, grammar and spelling will be corrected for the final version of the assessment and do not need comments at this stage of review. Formatting will also be corrected and harmonised a for the final version. Graphics editors will be used to format the final versions of tables and figures.

Instructions and guidelines for the additional review

It is mandatory to use the **review comments template** worksheet ("1. Comments" tab) in the Excel file provided below to submit comments. Please see the second worksheet ("2. Examples" tab) in the Excel file for examples of how to input comments. **Please do not modify any worksheet structure, formatting, formulas, or locked content.** Review comments will not be accepted unless properly entered in the Excel sheet provided. The additional review will take place from **November 5, 2025, to January 7, 2026**. All worksheets must be submitted by uploading using the 'Add Review' button on this page.

Please note that the draft documents are confidential. One of the conditions of being a reviewer, to which you agreed upon registration, is that the drafts cannot be cited, quoted or circulated. Please note the drafts are for your use only. If you have colleagues or know of others who would like to review the draft documents, please encourage them to register on the website but do not forward your draft document file(s) to them. Furthermore, as these are confidential drafts we ask you to please refrain from uploading the files into Artificial Intelligence/Natural Language Processing tools.

Important note: You must be registered as a reviewer and **logged in** to view the draft documents at the bottom of this page. Register [here](#) if you haven't already completed your registration.

If you have any questions, please contact the monitoring assessment technical support unit at monitoring-assessment@ipbes-tsu.org.

We thank you again for your continued support of IPBES.

Add Review

Title	Document	Deliverable	
MTA: First draft of Chapter 1	MTA_FOD_CH1.pdf	Monitoring assessment	edit
MTA: First draft of Chapter 2	MTA_FOD_CH2.pdf	Monitoring assessment	edit
MTA: First draft of Chapter 3	MTA_FOD_CH3.pdf	Monitoring assessment	edit

Deliverable Page*

External review of the IPBES Monitoring Assessment - 85782

^ Review File*

Add a new file*

Choisir un fichier Aucun fichier choisi

Upload review comments spreadsheet. Make sure you are using the correct template in .xlsx format or your comments won't be processed.
One file only.
2 MB limit.
Allowed types: xlsx.

Reviewer Name*

Enter your full name as [Salutation] [First name] [Family name] e.g. Dr. Mary Poppins

Reviewer Category*

- Select a value - v

Please select "Government" if you are submitting comments on behalf of a Government or "Individual" if you are not a national focal point or a person acting on behalf of a national focal point

Note to secretariat

Some notes to the secretariat

You can add a brief note to provide some background about your submission e.g. info about additional reviewers

Save

Suggested steps for effectively review the assessment

1. Read the [scoping report](#) to have in mind the request, the mandate given to the authors, the structure, and the elements that are included in the assessment and those that are not - so you don't make any comment requesting inputs outside of the scoping.
1. Check the chapter descriptions in the scoping report to identify the section that corresponds to your area of expertise.
1. If you review the SPM, read the background section BEFORE the key messages - so you don't make comments about something mentioned later.

How to write a « good » comment



- Comments must be provided in **English**, using the **Excel comments sheet** provided by the review system
- Review comments need to be submitted **before the deadline**
- There is no lower or upper limit to the amount of review comments
- Review comments should focus on **substantive issues** – no need for “you spelt this word wrong there”
- If several comments are identical on two separate parts of the document: **rewrite the entire comment**, do not say “see previous comment”
- Avoid the first person and use polite sentences

How to write a « good » comment

Comments may:

- **criticize** or **praise** the content of the assessment (don't hesitate to also say what you like!)
- examine consistency and **relevance**
- verify the **completeness** of the assessment results and request the addition of academic or gray references - and provide the references!
- introduce you as a **contributing author**
- identify areas requiring **clarification** or request a nuance or rewording



Example: criticism (positive or negative) or request for addition, rewording, deletion, modification, addition with argument/justification + possible new text proposal + priority level of the comment + reference when relevant

The concept of “global pandemics” used in the sentence is too narrow and focuses immediately on human health. In order to also reflect other human and non-human health threats, such as non-communicable disease, we suggest to replace “global pandemics” by “health threats”. Medium priority.

We believe that an important message regarding agriculture, contained in background message A3, is missing in this key message. To ensure consistency with the background message and equal coverage of all nexus elements, we suggest adding “intensification of agriculture has been unsustainable as it has causes biodiversity loss, increased water use, lowered food diversity, pollution and greenhouse gases emissions.” after "pandemic." High priority.

Figures SPM2B and figure SPM3 have identical colours but their meaning differs. This could be confusing for readers. To increase clarity, we suggest to change the colours of SPM3. Medium priority.

All comments and their responses are made available on IPBES website after publication of the assessment

Comments received during the external review of the Second Order Draft (SOD) chapters and for the First Order Draft Summary for Policy Makers (SPM) of the IPBES assessment of the sustainable use of wild species. The review period was from 15th April to 27th June 2021.								
Nb	Reviewer Name (Last, First)	Chapter (1-6; SPM)	From Page (start)	From Line (start)	To Page (end)	To Line (end)	Comments / Feedback	Response
1	Burgess, Neil (UNEP-WCMC)	6	0	0			There is some very good synthetic results material in this chapter, mainly on fisheries. But perhaps all or most of that is better elsewhere unless it is linked 100% to how policy options change outcomes. I do also wonder if (for fisheries) some version of the core figures in the following paper could be used to make general points about benefits of co-management of fisheries and how different options deliver (or not) https://www.semanticscholar.org/paper/Leadership%2C-social-capital-and-incentives-promote-Gut/9C3%A9rez-Ulloa/73c79d47068eb8cb68-b3cd659c-379d90850e543	Thank you for your comment. The positive feedback is greatly appreciated by the chapter authors. We have reviewed the content to more closely link to intended or realised outcomes. We have cited the mentioned paper, however do not feel it is representative of the field of co-management as this paper was controversial when it came out so we would prefer to recognise but not privilege these messages.
2	Germany	6	0	0	0	0	General comment: The chapter provides policy-relevant options, which have substantially formed the SPM. Well done!	Thank you for your comment. The positive feedback is greatly appreciated by the chapter authors.
3	Germany	6	0	0	0	0	General comment: At numerous occasions, policy-prescriptive language has been used in ch 6. This is quite disturbing because besides the SPM policy-makers will be particularly inclined to read this chapter. Please rephrase sentences such as "People and human rights should be ..." (p. 1, L11).	Thank you for your comment. According to your comments, we reviewed and rephrased many sentences to avoid policy-prescriptive language in our chapter.
4	Germany	6	0	0	0	0	General comment: We realized that there are numerous editorial issues and we expect these to be addressed before the next version is available. We have highlighted some aspects below.	Thank you for your comment. The feedback is greatly appreciated by the chapter authors.
5	Germany	6	0	0	0	0	Executive summary: The executive summary is remarkably long (8 pages), and is spiced with policy-prescriptive language. It is a bit disturbing that strongly phrased sentences (more below) are partly communicated without indications on the "degree of confidence"	Thank you for your comment. According to your comments, we reduced sentences and added "degree of confidence" at the the executive summary.
6	Jones, Victoria	6	0	0	0	0	The importance of upholding the rights of indigenous people and local communities in relation to sustainable use is mentioned a lot, perhaps with disenfranchised communities with low socioeconomic status and poorly upheld rights in mind. I think this chapter could benefit from more reflection of the broad spectrum of users involved in use whether it be sustainable or not, including very well resourced and politically well connected groups of relatively wealthy hunters in large parts of the world, wealthy Middle Eastern individuals securing falcons from the wild etc. These different groups have very different needs, motivations and power. There should also be different expectations upon these groups in relation to my above point in terms of the degree to which they can be expected to record take, contribute to monitoring and fill knowledge gaps	Many thanks for your comment. The focus on IPLC in IPBES is in a effort to recognise that IPLC have have different ways of perceiving the world than the majority society in their country are are often left out of assessments. The focus on this group of actors is therefore to address the imbalance, rather than to cover all actor groups. However, we take your point and will where relevant highlight the influence and therefore responsibility of powerful/dominant actors.
7	Kumagai, Joy (IPBES TSU on data)	6	0	0	0	0	GENERAL. Please provide the license of the figure (should be CC-0 or CC-BY) and produce a data deposit package for each figure. This comment applies to all figures produced by authors of the assessment	Thank you for your comment. All figures were provided a license in the final draft.
8	Kumagai, Joy (IPBES TSU on data)	6	0	0	0	0	General: Please add the literature reviews into a data management report specifying how and when these literature reviews were performed.	Thank you for your comment. The literature review is now in a data mangement report available at https://doi.org/10.5281/zenodo.4663236
9	Malsch, Kelly	6	0	0			In general, this chapter has quite a lot of content, but I found it a bit hard to follow, with some jumping around. I was expecting more content around how to actually ensure that use is sustainable -- to more content around the different policy approaches (e.g. Maximum sustainable yield in fisheries, etc.) -- in general, the fisheries and timber "world" -- as these are commercially important stocks tend to get more attention and seem to have more sophisticated approaches to "sustainability" -- but what policy approaches could be applied to wider sustainable use of species -- what lessons could be learned from these sectors -- and what should be pursued to be able to effectively monitor/manage species use in a way that does not harm populations in the wild? I felt these aspects -- which will ultimately be needed as the world's governments move towards establishing targets/indicators for the Post-2020 Global Framework, were a bit light -- or at least hard to find / not very prominent in this chapter.	Thank you for comments. Chapter 3 on the status of and trends in the use of wild species and its implications for wild species, the environment and people present the global indicators on the sustainability of use. Chapter 6 was also revised to better present the enabling conditions and policy options for the sustainale sue fo wild species.
							Great advances since the FOD. A synthesis exercise would contribute to a greater clarity and understanding of	

10 December 2025
12.00 to 2.00 p.m. CET

Add Review			
Title	Document	Deliverable	
MTA: First draft of Chapter 1	MTA_FOD_CH1.pdf	Monitoring assessment	edit
MTA: First draft of Chapter 2	MTA_FOD_CH2.pdf	Monitoring assessment	edit
MTA: First draft of Chapter 3	MTA_FOD_CH3.pdf	Monitoring assessment	edit
MTA: First draft of Chapter 4	MTA_FOD_CH4.pdf	Monitoring assessment	edit
MTA: First draft of the Glossary	MTA_FOD_Glossary.pdf	Monitoring assessment	edit
MTA: First draft of the SPM	MTA_FOD_SPM.pdf	Monitoring assessment	edit
MTA: Online dialogue meeting with stakeholders	Registration link	Monitoring assessment	edit
MTA: Online dialogue meetings with national focal points	Registration link	Monitoring assessment	edit
MTA: Review comments template	review_comments_template_MTA_fod_v1.xlsx	Monitoring assessment	edit

Questions ?



biodiversa+
European Biodiversity Partnership

EUROPEAN PARTNERSHIP



Co-funded by
the European Union

Thank you for attending!

If you have any questions, please contact
marie-claire.danner@fondationbiodiversite.fr



www.biodiversa.org



contact@biodiversa.org

