



# Unraveling the Potential of Spontaneous Forest Establishment for Improving Ecosystem Functions and Services in Dynamic Landscapes (SPONFOREST)

Arndt Hampe (INRA, France)

Funded projects final conference, 12-13 November 2019, Brussels

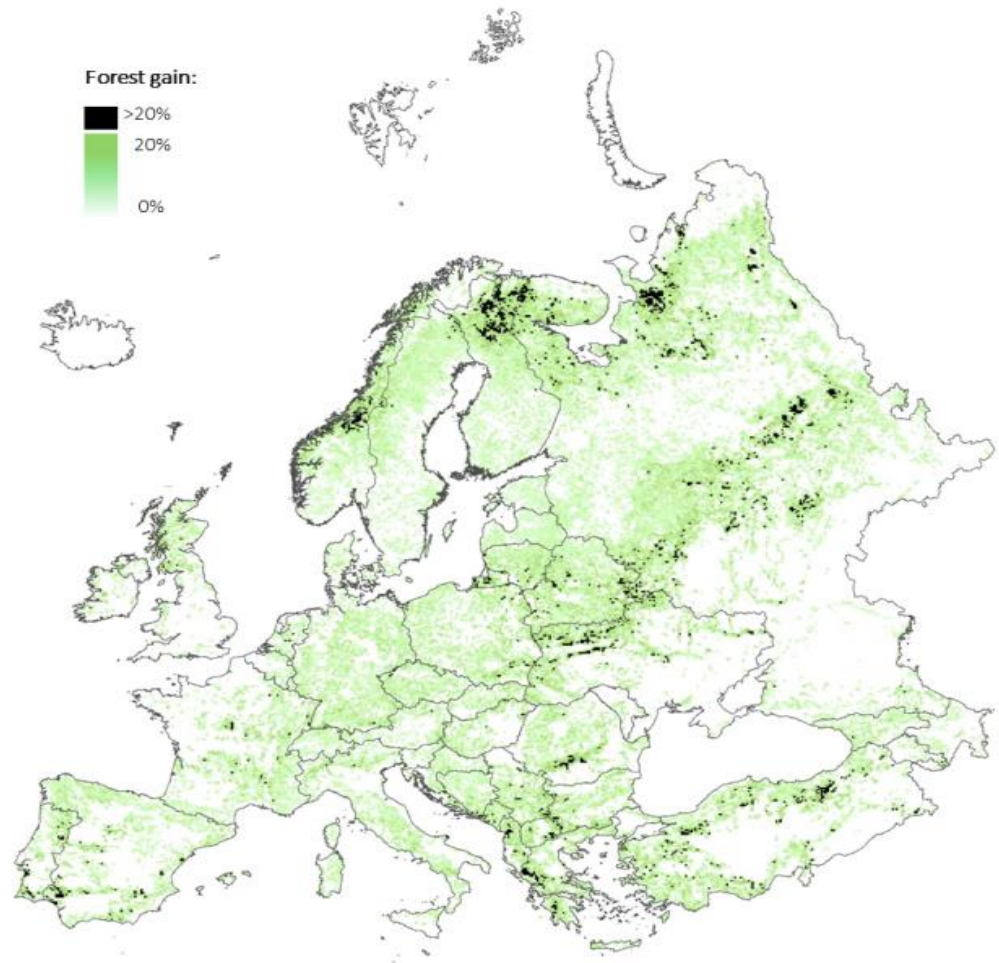
BiodivERsA COFUND Call (2015-2016)



biodiversa

Europe is the only region of the world with a positive net change in forest area during the last 25 years.

In this period **forest area in Europe has increased by 17.5 million hectares** (almost half of the area of Italy).

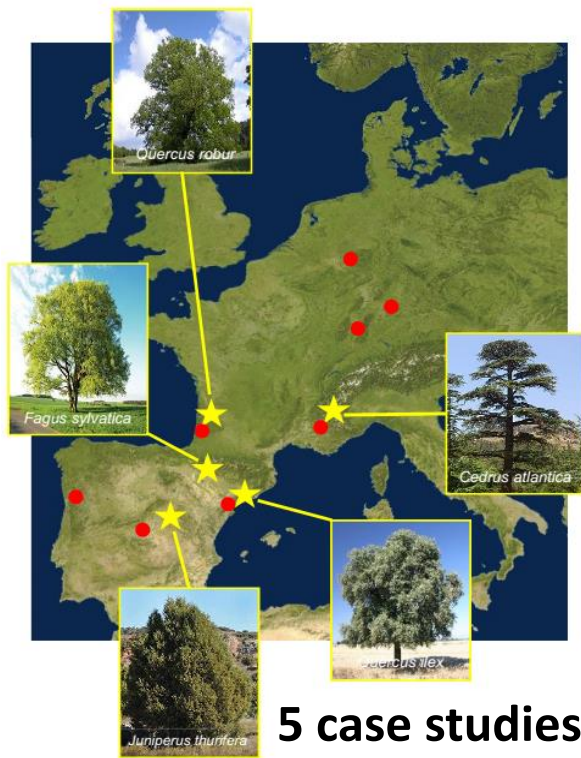


Palmero-Iniesta *et al.* (unpubl.)

# SPONFOREST

Spontaneous Forest Establishment

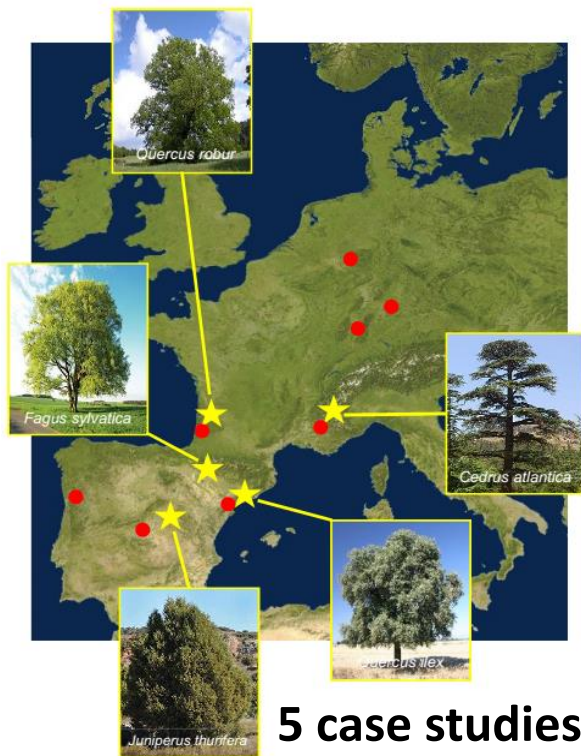
**SFE:** cost-efficient and politically feasible tool for reinforcing forest networks in fragmented rural landscapes



# SPONFOREST

## Spontaneous Forest Establishment

**SFE:** cost-efficient and politically feasible tool for reinforcing forest networks in fragmented rural landscapes



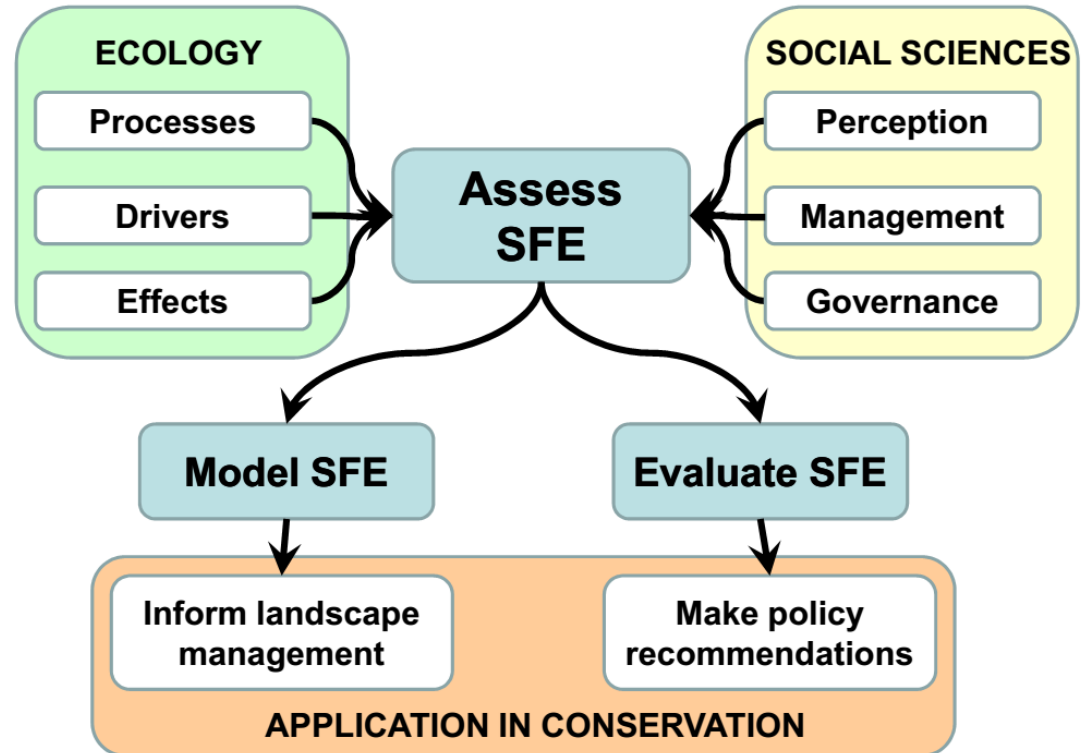
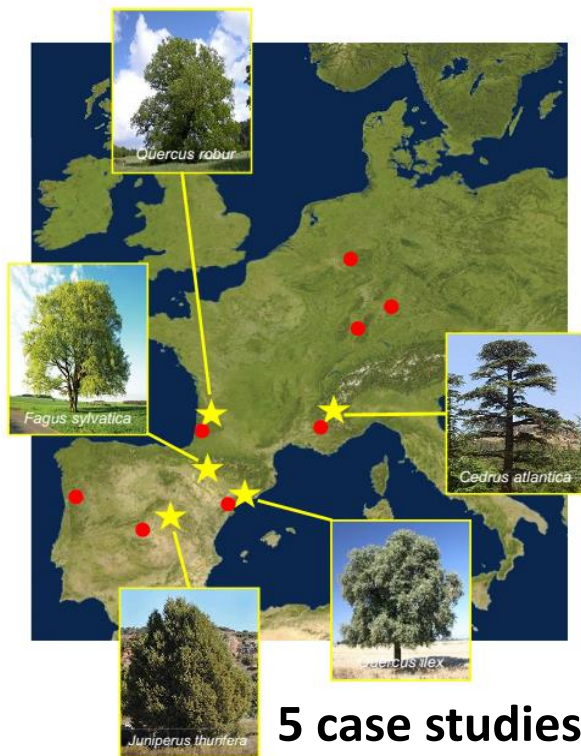
**5 case studies**

- 1) How do new forest patches establish?
- 2) Which consequences has the establishment process for their character and functioning?
- 3) Which ecosystem services do they provide?
- 4) How are they perceived and managed by local societies and political governance systems?

# SPONFOREST

## Spontaneous Forest Establishment

**SFE**: cost-efficient and politically feasible tool for reinforcing forest networks in fragmented rural landscapes



# CONSORTIUM



*Partner 1: BIOGECO (INRA)*



*Funding: ANR*

*Partner 2: URFM (INRA)*



*Funding: ANR*

*Partner 3: CREAM*



*Funding: MINECO*

*Partner 4: MNCN (CSIC)*



*Funding: MINECO*

*Partner 5: CIBIO (ICETA)*



*Funding: FCT*

*Partner 6: Univ. Hohenheim*



*Funding: DFG*

*Sub-contracted partners*

*Partner 6a: European Forest Institute*



*Funding: DFG*

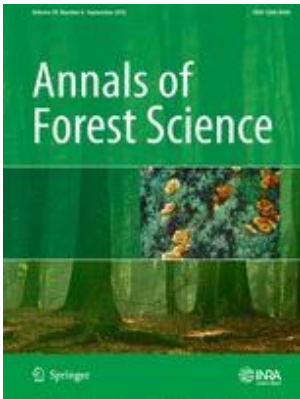
*Partner 6b: Unique Forestry & Landuse*



*Funding: DFG*

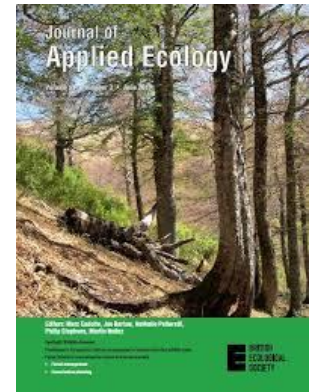
# SCIENTIFIC OUTPUTS

- New forests show a distinct functioning (e.g. legacy effects).
- Their perception greatly depends on the socio-economic context.
- They are generally not considered as a landscape element of its own and underlie a disparate management and governance.



“Establishment of second-growth forests in human landscapes: ecological mechanisms and genetic consequences ”

“Managing forest regeneration and expansion at a time of unprecedented global change”



# SOCIETAL / POLICY OUTPUTS

- New forests show a distinct functioning (e.g. legacy effects).
- Their perception greatly depends on the socio-economic context.
- They are generally not considered as a landscape element of its own and underlie a disparate management and governance.

## GENETIC RESOURCES THE KEY TO ADAPTATION OF FORESTS TO GLOBAL CHANGE



Joint policy workshop “Genetic resources: the key to forest adaptation to global change” (Brussels, 2019)

## BiodivERsA Policy brief





# ACKNOWLEDGEMENTS

